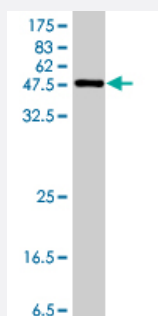


# MRPL48 polyclonal antibody (A01)

Catalog # H00051642-A01

Size 50 uL

## Applications



Western Blot detection against Immunogen (49.43 KDa) .

## Specification

<b>Product Description</b>	Mouse polyclonal antibody raised against a full-length recombinant MRPL48.
<b>Immunogen</b>	MRPL48 (AAH09764, 1 a.a. ~ 212 a.a) full-length recombinant protein with GST tag.
<b>Sequence</b>	MSGTLGKVLCLRNNTIFKQAFSLLRFRTSGEKPIYSVGGILLSISRPYKTKPTHGIGKYKHLIAEEPK KKKGKVEVRAINLGTDYEGVLNIHLTAYDMTLAESYAQYVHNLCNSLSIKVEESYAMPTKTIEVLQL QDQGSKMLLDSVLTTHERVVQISGLSATFAEIFLEIIQSSLPEGVRLSVKEHTEEDFKGRFKARPEL EELLAKLK
<b>Host</b>	Mouse
<b>Reactivity</b>	Human
<b>Interspecies Antigen Sequence</b>	Mouse (81); Rat (82)
<b>Quality Control Testing</b>	Antibody Reactive Against Recombinant Protein. Western Blot detection against Immunogen (49.43 KDa) .
<b>Storage Buffer</b>	50 % glycerol
<b>Storage Instruction</b>	Store at -20°C or lower. Aliquot to avoid repeated freezing and thawing.

## Applications

- Western Blot (Recombinant protein)

[Protocol Download](#)

- ELISA

## Gene Info — MRPL48

**Entrez GeneID** [51642](#)

**GeneBank Accession#** [BC009764](#)

**Protein Accession#** [AAH09764](#)

**Gene Name** MRPL48

**Gene Alias** CGI-118, FLJ17047, FLJ99260, HSPC290, L48MT, MGC13323, MRP-L48

**Gene Description** mitochondrial ribosomal protein L48

**Gene Ontology** [Hyperlink](#)

**Gene Summary** Mammalian mitochondrial ribosomal proteins are encoded by nuclear genes and help in protein synthesis within the mitochondrion. Mitochondrial ribosomes (mitoribosomes) consist of a small 28 S subunit and a large 39S subunit. They have an estimated 75% protein to rRNA composition compared to prokaryotic ribosomes, where this ratio is reversed. Another difference between mammalian mitoribosomes and prokaryotic ribosomes is that the latter contain a 5S rRNA. Among different species, the proteins comprising the mitoribosome differ greatly in sequence, and sometimes in biochemical properties, which prevents easy recognition by sequence homology. This gene encodes a 39S subunit protein. A pseudogene corresponding to this gene is found on chromosome 6p. [provided by RefSeq]

**Other Designations** 39S ribosomal protein L48, mitochondrial

## Publication Reference

- [Methylation of 12S rRNA Is Necessary for In Vivo Stability of the Small Subunit of the Mammalian Mitochondrial Ribosome.](#)

Metodiev MD, Lesko N, Park CB, Camara Y, Shi Y, Wibom R, Hultenby K, Gustafsson CM, Larsson NG.

Cell Metabolism 2009 Apr; 9(4):386.

Application: WB-Ti, Mouse, Mouse hearts