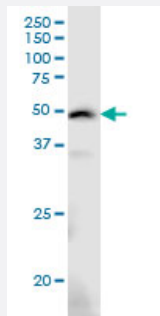


ARMCX3 monoclonal antibody (M01), clone 2G3

Catalog # H00051566-M01

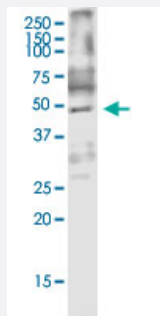
Size 100 ug

Applications



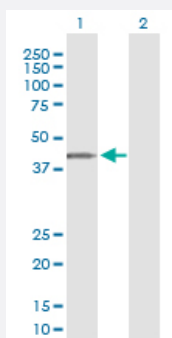
Western Blot (Cell lysate)

ARM CX3 monoclonal antibody (M01), clone 2G3. Western Blot analysis of ARM CX3 expression in HeLa S3 NE.



Western Blot (Cell lysate)

ARM CX3 monoclonal antibody (M01), clone 2G3. Western Blot analysis of ARM CX3 expression in U-2 OS.



Western Blot (Transfected lysate)

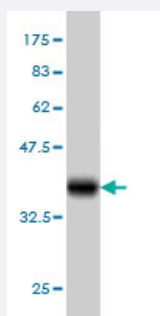
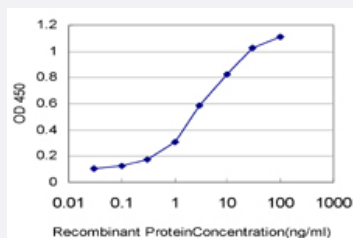
Western Blot analysis of ARM CX3 expression in transfected 293T cell line by ARM CX3 monoclonal antibody (M01), clone 2G3.

Lane 1: ARM CX3 transfected lysate (Predicted MW: 42.5 KDa).

Lane 2: Non-transfected lysate.

Sandwich ELISA (Recombinant protein)

Detection limit for recombinant GST tagged ARMCX3 is approximately 0.1ng/ml as a capture antibody.



Western Blot detection against Immunogen (36.96 KDa) .

Specification

Product Description	Mouse monoclonal antibody raised against a partial recombinant ARMCX3.
Immunogen	ARMCX3 (NP_057691, 278 a.a. ~ 379 a.a) partial recombinant protein with GST tag. MW of the GST tag alone is 26 KDa.
Sequence	RELLRAQVPSSLGSLFNKKENKEVILKLLVIFENINDNFKWEENEPTQNQFGEGSLFFFLKEFQVC ADKVLGIESHHDFLVKVKVGKFMALAEHMFPSQE
Host	Mouse
Reactivity	Human
Interspecies Antigen Sequence	Mouse (89); Rat (87)
Isotype	IgG2a Kappa
Quality Control Testing	Antibody Reactive Against Recombinant Protein. Western Blot detection against Immunogen (36.96 KDa) .
Storage Buffer	In 1x PBS, pH 7.4
Storage Instruction	Store at -20°C or lower. Aliquot to avoid repeated freezing and thawing.

Applications

- Western Blot (Cell lysate)

ARMCX3 monoclonal antibody (M01), clone 2G3. Western Blot analysis of ARMCX3 expression in Hela S3 NE.

[Protocol Download](#)

- Western Blot (Cell lysate)

ARMCX3 monoclonal antibody (M01), clone 2G3. Western Blot analysis of ARMCX3 expression in U-2 OS.

[Protocol Download](#)

- Western Blot (Transfected lysate)

Western Blot analysis of ARMCX3 expression in transfected 293T cell line by ARMCX3 monoclonal antibody (M01), clone 2G3.

Lane 1: ARMCX3 transfected lysate (Predicted MW: 42.5 KDa).

Lane 2: Non-transfected lysate.

[Protocol Download](#)

- Western Blot (Recombinant protein)

[Protocol Download](#)

- Sandwich ELISA (Recombinant protein)

Detection limit for recombinant GST tagged ARMCX3 is approximately 0.1ng/ml as a capture antibody.

[Protocol Download](#)

- ELISA

Gene Info — ARMCX3

Entrez GeneID	51566
---------------	-----------------------

GeneBank Accession#	NM_016607
---------------------	---------------------------

Protein Accession#	NP_057691
--------------------	---------------------------

Gene Name	ARMCX3
-----------	--------

Gene Alias	ALEX3, DKFZp781N1954, KIAA0443, MGC12199, dJ545K15.2
------------	--

Gene Description	armadillo repeat containing, X-linked 3
Omim ID	300364
Gene Ontology	Hyperlink
Gene Summary	<p>This gene encodes a member of the ALEX family of proteins which may play a role in tumor suppression. The encoded protein contains a potential N-terminal transmembrane domain and a single Armadillo (arm) repeat. Other proteins containing the arm repeat are involved in development, maintenance of tissue integrity, and tumorigenesis. This gene is closely localized with other family members on the X chromosome. Three transcript variants encoding the same protein have been identified for this gene. [provided by RefSeq]</p>
Other Designations	1200004E24Rik OTTHUMP00000023688 arm protein lost in epithelial cancers, X chromosome, 3