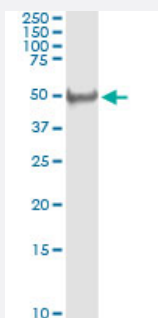


SCLY (Human) IP-WB Antibody Pair

Catalog # H00051540-PW1

Size 1 Set

Applications



Immunoprecipitation of SCLY transfected lysate using rabbit polyclonal anti-SCLY and Protein A Magnetic Bead ([U0007](#)), and immunoblotted with mouse purified polyclonal anti-SCLY.

Specification

Product Description	This IP-WB antibody pair set comes with one antibody for immunoprecipitation and another to detect the precipitated protein in western blot.
Reactivity	Human
Interspecies Antigen Sequence	Mouse (82)
Quality Control Testing	Immunoprecipitation-Western Blot (IP-WB) Immunoprecipitation of SCLY transfected lysate using rabbit polyclonal anti-SCLY and Protein A Magnetic Bead (U0007), and immunoblotted with mouse purified polyclonal anti-SCLY.
Supplied Product	Antibody pair set content: 1. Antibody pair for IP: rabbit polyclonal anti-SCLY (300 ul) 2. Antibody pair for WB: mouse purified polyclonal anti-SCLY (50 ug)
Storage Instruction	Store reagents of the antibody pair set at -20°C or lower. Please aliquot to avoid repeated freeze thaw cycle. Reagents should be returned to -20°C storage immediately after use.

Applications

- Immunoprecipitation-Western Blot

[Protocol Download](#)

Gene Info — SCLY

Entrez GeneID	51540
Gene Name	SCLY
Gene Alias	SCL
Gene Description	selenocysteine lyase
Omim ID	611056
Gene Ontology	Hyperlink
Gene Summary	Selenocysteine lyase (SCLY; EC 4.4.1.16) catalyzes the pyridoxal 5-prime phosphate-dependent conversion of L-selenocysteine to L-alanine and elemental selenium (Mihara et al., 2000 [PubMed 10692412]).[supplied by OMIM]
Other Designations	-

Pathway

- [Metabolic pathways](#)
- [Selenoamino acid metabolism](#)

Disease

- [Tobacco Use Disorder](#)