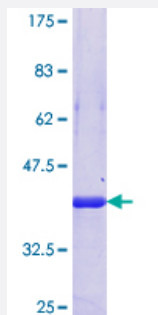


PPHLN1 (Human) Recombinant Protein (Q01)

Catalog # H00051535-Q01

Size 25 ug, 10 ug

Applications



Specification

Product Description	Human PPHLN1 partial ORF (NP_958846.1, 168 a.a. - 258 a.a.) recombinant protein with GST-tag at N-terminal.
Sequence	KVLDKPSRLTEKELAEAAASKWAAEKLEKSDESNLPEISEYEAGSTAPLFTDQPEEPESNTTHGIE LFEDSQLTTRSKAIAASKTKEIEQVRV
Host	Wheat Germ (in vitro)
Theoretical MW (kDa)	35.75
Interspecies Antigen Sequence	Mouse (83); Rat (81)
Preparation Method	in vitro wheat germ expression system
Purification	Glutathione Sepharose 4 Fast Flow
Quality Control Testing	12.5% SDS-PAGE Stained with Coomassie Blue.
Storage Buffer	50 mM Tris-HCl, 10 mM reduced Glutathione, pH=8.0 in the elution buffer.
Storage Instruction	Store at -80°C. Aliquot to avoid repeated freezing and thawing.
Note	Best use within three months from the date of receipt of this protein.

Applications

- Enzyme-linked Immunoabsorbent Assay
- Western Blot (Recombinant protein)
- Antibody Production
- Protein Array

Gene Info — PPHLN1

Entrez GeneID [51535](#)

GeneBank Accession# [NM_201438](#)

Protein Accession# [NP_958846.1](#)

Gene Name PPHLN1

Gene Alias HSPC206, HSPC232, MGC48786

Gene Description periphilin 1

Omim ID [608150](#)

Gene Ontology [Hyperlink](#)

Gene Summary The protein encoded by this gene is one of the several proteins that become sequentially incorporated into the cornified cell envelope during the terminal differentiation of keratinocyte at the outer layers of epidermis. This protein interacts with periplakin, which is known as a precursor of the cornified cell envelope. The cellular localization pattern and insolubility of this protein suggest that it may play a role in epithelial differentiation and contribute to epidermal integrity and barrier formation. Multiple alternatively spliced transcript variants encoding distinct isoforms have been observed. [provided by RefSeq]

Other Designations gastric cancer antigen Ga50

Disease

- [Tobacco Use Disorder](#)