

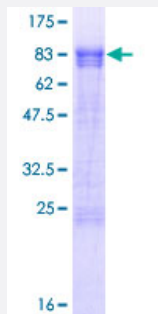
## Full-Length

# PPHLN1 (Human) Recombinant Protein (P01)

Catalog # H00051535-P01

Size 25 ug, 10 ug

## Applications



## Specification

### Product Description

Human PPHLN1 full-length ORF ( NP\_958923.1, 1 a.a. - 374 a.a.) recombinant protein with GST-tag at N-terminal.

### Sequence

MAYRRDEMWSEGRYEYERIPRERAPPRSHPSDGYNRLVNIVPKKPPLLDPRGEGSYNRYSHVD  
YRDYDEGRSFSHRRSGPPHRGDESGYRWTRDDHSASRQPEYRDMRDGFRKSFYSSHYARE  
RSPYKRDNTFFRESPVGRKDSPHSRSGSSVSSRSYSPERSKSYSFHQSQHRKSVRPGASYKRQ  
NEGNPERDKERPVQSLKTSRDTSPSSGSAVSSSKVLDKPSRLTEKELAEAAASKWAAEKLEKSD  
ESNLPEISEYEAGSTAPLFTDQPEEPESNTTHGIELFEDSQLTTRSKAASKTKEIEQVYRQDCETF  
GMVVKMLIEKDPSLEKSIQFALRQNLHEIGERCVEELKHFAEYDTSTQDFGEPF

### Host

Wheat Germ (in vitro)

### Theoretical MW (kDa)

69.8

### Interspecies Antigen Sequence

Mouse (80); Rat (81)

### Preparation Method

[in vitro wheat germ expression system](#)

### Purification

Glutathione Sepharose 4 Fast Flow

### Quality Control Testing

12.5% SDS-PAGE Stained with Coomassie Blue.

### Storage Buffer

50 mM Tris-HCl, 10 mM reduced Glutathione, pH=8.0 in the elution buffer.

**Storage Instruction**

Store at -80°C. Aliquot to avoid repeated freezing and thawing.

**Note**

Best use within three months from the date of receipt of this protein.

## Applications

- Enzyme-linked Immunoabsorbent Assay
- Western Blot (Recombinant protein)
- Antibody Production
- Protein Array

## Gene Info — PPHLN1

**Entrez GeneID**[51535](#)**GeneBank Accession#**[NM\\_201515.1](#)**Protein Accession#**[NP\\_958923.1](#)**Gene Name**

PPHLN1

**Gene Alias**

HSPC206, HSPC232, MGC48786

**Gene Description**

periphilin 1

**Omim ID**[608150](#)**Gene Ontology**[Hyperlink](#)**Gene Summary**

The protein encoded by this gene is one of the several proteins that become sequentially incorporated into the cornified cell envelope during the terminal differentiation of keratinocyte at the outer layers of epidermis. This protein interacts with periplakin, which is known as a precursor of the cornified cell envelope. The cellular localization pattern and insolubility of this protein suggest that it may play a role in epithelial differentiation and contribute to epidermal integrity and barrier formation. Multiple alternatively spliced transcript variants encoding distinct isoforms have been observed. [provided by RefSeq]

**Other Designations**

gastric cancer antigen Ga50

## Disease

- [Tobacco Use Disorder](#)