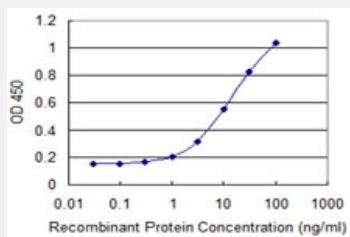


PPHLN1 monoclonal antibody (M01), clone 4B6

Catalog # H00051535-M01

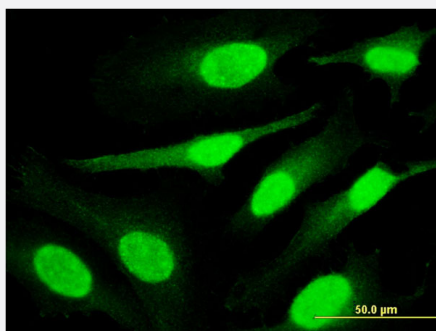
Size 100 ug

Applications



Sandwich ELISA (Recombinant protein)

Detection limit for recombinant GST tagged PPHLN1 is 0.3 ng/ml as a capture antibody.



Immunofluorescence

Immunofluorescence of monoclonal antibody to PPHLN1 on HeLa cell .
[antibody concentration 10 ug/ml]



Western Blot detection against Immunogen (35.75 KDa) .

Specification

Product Description

Mouse monoclonal antibody raised against a partial recombinant PPHLN1.

Immunogen	PPHLN1 (NP_958846.1, 168 a.a. ~ 258 a.a) partial recombinant protein with GST tag. MW of the GST tag alone is 26 KDa.
Sequence	KVLDKPSRLTEKELAEAAASKWAAEKLEKSDENLPEISEYEAGSTAPLFTDQPEEPESNTTHGIE LFEDSQLTTRSKAIAASKTKEIEQVRV
Host	Mouse
Reactivity	Human
Interspecies Antigen Sequence	Mouse (83); Rat (81)
Isotype	IgG2a Kappa
Quality Control Testing	Antibody Reactive Against Recombinant Protein. Western Blot detection against Immunogen (35.75 KDa) .
Storage Buffer	In 1x PBS, pH 7.4
Storage Instruction	Store at -20°C or lower. Aliquot to avoid repeated freezing and thawing.

Applications

- Western Blot (Recombinant protein)

[Protocol Download](#)

- Sandwich ELISA (Recombinant protein)

Detection limit for recombinant GST tagged PPHLN1 is 0.3 ng/ml as a capture antibody.

[Protocol Download](#)

- ELISA

- Immunofluorescence

Immunofluorescence of monoclonal antibody to PPHLN1 on HeLa cell . [antibody concentration 10 ug/ml]

Gene Info — PPHLN1

Entrez GeneID	51535
GeneBank Accession#	NM_201438

Protein Accession#	NP_958846.1
Gene Name	PPHLN1
Gene Alias	HSPC206, HSPC232, MGC48786
Gene Description	periplilin 1
Omim ID	608150
Gene Ontology	Hyperlink
Gene Summary	<p>The protein encoded by this gene is one of the several proteins that become sequentially incorporated into the cornified cell envelope during the terminal differentiation of keratinocyte at the outer layers of epidermis. This protein interacts with periplakin, which is known as a precursor of the cornified cell envelope. The cellular localization pattern and insolubility of this protein suggest that it may play a role in epithelial differentiation and contribute to epidermal integrity and barrier formation. Multiple alternatively spliced transcript variants encoding distinct isoforms have been observed. [provided by RefSeq]</p>
Other Designations	gastric cancer antigen Ga50

Disease

- [Tobacco Use Disorder](#)