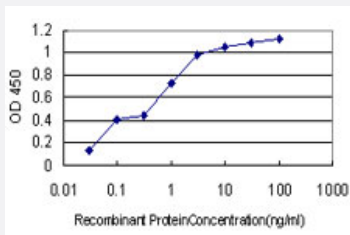


# ANAPC11 monoclonal antibody (M01), clone 1B4-1A4

Catalog # H00051529-M01

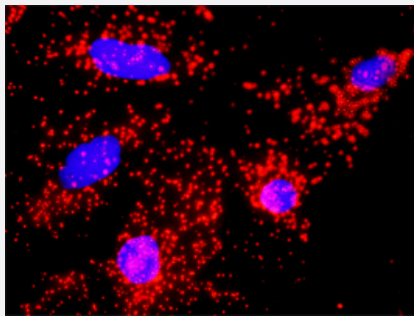
Size 100 ug

## Applications



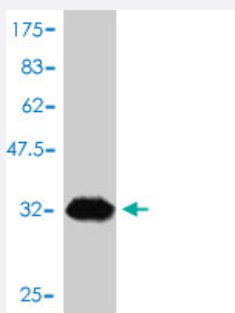
### Sandwich ELISA (Recombinant protein)

Detection limit for recombinant GST tagged ANAPC11 is approximately 0.03ng/ml as a capture antibody.



### In situ Proximity Ligation Assay (Cell)

Proximity Ligation Analysis of protein-protein interactions between CDC20 and ANAPC11. HeLa cells were stained with anti-CDC20 rabbit purified polyclonal 1:1200 and anti-ANAPC11 mouse monoclonal antibody 1:50. Each red dot represents the detection of protein-protein interaction complex, and nuclei were counterstained with DAPI (blue).



Western Blot detection against Immunogen (31.68 KDa) .

## Specification

### Product Description

Mouse monoclonal antibody raised against a full length recombinant ANAPC11.

|                               |  |
|-------------------------------|--|
| Immunogen                     | ANAPC11 (AAH00607, 1 a.a. ~ 54 a.a) full-length recombinant protein with GST tag. MW of the GST tag alone is 26 KDa. |
| Sequence                      | MGPGPVGKVPGDDCPLVWGQCSCFHMHCILKWLHAQQVQQHCPMCRQEWFKE   |
| Host                          | Mouse  |
| Reactivity                    | Human  |
| Interspecies Antigen Sequence | Mouse (91); Rat (91)   |
| Isotype                       | IgG1 kappa   |
| Quality Control Testing       | Antibody Reactive Against Recombinant Protein.<br>Western Blot detection against Immunogen (31.68 KDa) .             |
| Storage Buffer                | In 1x PBS, pH 7.4  |
| Storage Instruction           | Store at -20°C or lower. Aliquot to avoid repeated freezing and thawing.   |

## Applications

- Western Blot (Recombinant protein)

[Protocol Download](#)

- Sandwich ELISA (Recombinant protein)

Detection limit for recombinant GST tagged ANAPC11 is approximately 0.03ng/ml as a capture antibody.

[Protocol Download](#)

- ELISA

- In situ* Proximity Ligation Assay (Cell)

Proximity Ligation Analysis of protein-protein interactions between CDC20 and ANAPC11. HeLa cells were stained with anti-CDC20 rabbit purified polyclonal 1:1200 and anti-ANAPC11 mouse monoclonal antibody 1:50. Each red dot represents the detection of protein-protein interaction complex, and nuclei were counterstained with DAPI (blue).

## Gene Info — ANAPC11

Entrez GeneID [51529](#)

GeneBank Accession# [BC000607](#)

|                    |   |
|--------------------|---|
| Protein Accession# | <a href="#">AAH00607</a>  |
| Gene Name          | ANAPC11   |
| Gene Alias         | APC11, Apc11p, HSPC214, MGC882  |
| Gene Description   | anaphase promoting complex subunit 11   |
| Gene Ontology      | <a href="#">Hyperlink</a>   |
| Other Designations | APC11 anaphase promoting complex subunit 11 APC11 anaphase promoting complex subunit 11 homolog anaphase promoting complex subunit 11 (yeast APC11 homolog) |

## Publication Reference

- [Integrated analysis highlights APC11 protein expression as a likely new independent predictive marker for colorectal cancer.](#)

Drouet Y, Treilleux I, Viari A, Léon S, Devouassoux-Shisheboran M, Voirin N, de la Fouchardière C, Manship B, Puisieux A, Lasset C, Moyret-Lalle C.

Scientific Reports 2018 May; 8(1):7386.

Application: WB-Ce, Human, TC7, TC71, IS-2, HCT-15, HT-29, Co-115, Lovo, SW-480, SW-620, SW-1116 cells

## Pathway

- [Cell cycle](#)
- [Ubiquitin mediated proteolysis](#)