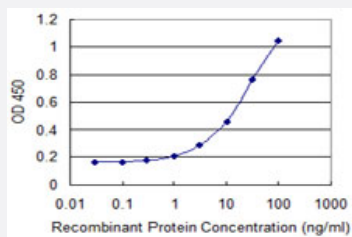


NCKIPSD monoclonal antibody (M07), clone 2E4

Catalog # H00051517-M07

Size 100 ug

Applications



Sandwich ELISA (Recombinant protein)

Detection limit for recombinant GST tagged NCKIPSD is 0.3 ng/ml as a capture antibody.

Specification

Product Description	Mouse monoclonal antibody raised against a partial recombinant NCKIPSD.
Immunogen	NCKIPSD (NP_909119.1, 1 a.a. ~ 99 a.a) partial recombinant protein with GST tag. MW of the GST tag alone is 26 KDa.
Sequence	MYRALYAFRSAEPNALAFAAGETFLVLERSSAHWWLAARARSGETGYVPPAYLRRRLQGLEQDVL QAIDRAIEAVHNTAMRDGGKYSLEQRGVLQKLIHH
Host	Mouse
Reactivity	Human
Interspecies Antigen Sequence	Mouse (96); Rat (96)
Isotype	IgG2a Kappa
Quality Control Testing	Antibody Reactive Against Recombinant Protein.
Storage Buffer	In 1x PBS, pH 7.4
Storage Instruction	Store at -20°C or lower. Aliquot to avoid repeated freezing and thawing.

Applications

- Sandwich ELISA (Recombinant protein)

Detection limit for recombinant GST tagged NCKIPSD is 0.3 ng/ml as a capture antibody.

[Protocol Download](#)

- ELISA

Gene Info — NCKIPSD

Entrez GeneID [51517](#)

GeneBank Accession# [NM_184231](#)

Protein Accession# [NP_909119.1](#)

Gene Name NCKIPSD

Gene Alias AF3P21, DIP, DIP1, MGC23891, ORF1, SPIN90, WASLBP, WISH

Gene Description NCK interacting protein with SH3 domain

Omim ID [606671](#)

Gene Ontology [Hyperlink](#)

Gene Summary The protein encoded by this gene is localized exclusively in the cell nucleus. It plays a role in signal transduction, and may function in the maintenance of sarcomeres and in the assembly of myofibrils into sarcomeres. It also plays an important role in stress fiber formation. The gene is involved in therapy-related leukemia by a chromosomal translocation t(3;11)(p21;q23) that involves this gene and the myeloid/lymphoid leukemia gene. Alternative splicing occurs in this locus and two transcript variants encoding distinct isoforms have been identified. [provided by RefSeq]

Other Designations SH3 protein interacting with Nck, 90 kDa|dia interacting protein|diaphanous protein interacting protein