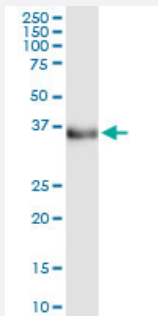


ETV7 (Human) IP-WB Antibody Pair

Catalog # H00051513-PW1

Size 1 Set

Applications



Immunoprecipitation of ETV7 transfected lysate using rabbit polyclonal anti-ETV7 and Protein A Magnetic Bead ([U0007](#)), and immunoblotted with mouse polyclonal anti-ETV7.

Specification

Product Description	This IP-WB antibody pair set comes with one antibody for immunoprecipitation and another to detect the precipitated protein in western blot.
Reactivity	Human
Quality Control Testing	Immunoprecipitation-Western Blot (IP-WB) Immunoprecipitation of ETV7 transfected lysate using rabbit polyclonal anti-ETV7 and Protein A Magnetic Bead (U0007), and immunoblotted with mouse polyclonal anti-ETV7.
Supplied Product	Antibody pair set content: 1. Antibody pair for IP: rabbit polyclonal anti-ETV7 (300 ul) 2. Antibody pair for WB: mouse polyclonal anti-ETV7 (50 ul)
Storage Instruction	Store reagents of the antibody pair set at -20°C or lower. Please aliquot to avoid repeated freeze thaw cycle. Reagents should be returned to -20°C storage immediately after use.

Applications

- Immunoprecipitation-Western Blot

[Protocol Download](#)

Gene Info — ETV7

Entrez GeneID	51513
Gene Name	ETV7
Gene Alias	TEL-2, TEL2, TELB
Gene Description	ets variant 7
Omim ID	605255
Gene Ontology	Hyperlink
Gene Summary	The ETS (E26 transformation-specific) family of transcription factors, of which ETV7 is a member, is a large group of evolutionarily conserved transcriptional regulators that play an important role in a variety of cellular processes throughout development and differentiation, and are involved in oncogenesis as well (Potter et al., 2000 [PubMed 10828014]).[supplied by OMIM]
Other Designations	Ets transcription factor TEL-2b OTTHUMP00000016290 TEL2 oncogene ets variant gene 7 (TEL 2 oncogene) transcription factor ets

Pathway

- [Dorso-ventral axis formation](#)

Disease

- [Tobacco Use Disorder](#)