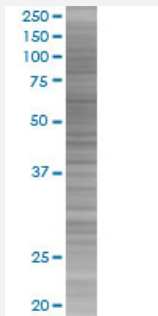


TH1L 293T Cell Transient Overexpression Lysate(Denatured)

Catalog # H00051497-T01

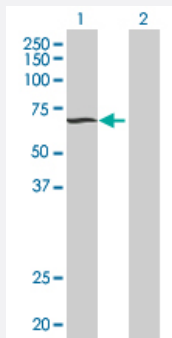
Size 100 uL

Applications



SDS-PAGE Gel

TH1L transfected lysate.



Western Blot

Lane 1: TH1L transfected lysate (66.2 KDa)

Lane 2: Non-transfected lysate.

Specification

Transfected Cell Line	293T
Plasmid	pCMV-TH1L full-length
Host	Human
Theoretical MW (kDa)	66.2
Interspecies Antigen Sequence	Mouse (97); Rat (97)

Quality Control Testing

Transient overexpression cell lysate was tested with Anti-TH1L antibody ([H00051497-B01](#)) by Western Blots.
 SDS-PAGE Gel
 TH1L transfected lysate.
 Western Blot
 Lane 1: TH1L transfected lysate (66.2 KDa)
 Lane 2: Non-transfected lysate.

Storage Buffer

1X Sample Buffer (50 mM Tris-HCl, 2% SDS, 10% glycerol, 300 mM 2-mercaptoethanol, 0.01% Bromophenol blue)

Storage Instruction

Store at -80°C. Aliquot to avoid repeated freezing and thawing.

Applications

- Western Blot

Gene Info — TH1L

Entrez GeneID	51497
GeneBank Accession#	NM_198976.1
Protein Accession#	-
Gene Name	TH1L
Gene Alias	HSPC130, NELF-C, NELF-D, TH1
Gene Description	TH1-like (Drosophila)
Omim ID	605297
Gene Ontology	Hyperlink
Gene Summary	The NELF complex of proteins interacts with the DSIF protein complex to repress transcriptional elongation by RNA polymerase II. The protein encoded by this gene is an essential part of the NELF complex. Alternative translation initiation site usage results in the formation of two isoforms with different N-termini. [provided by RefSeq]
Other Designations	OTTHUMP00000031415 TH1 drosophila homolog TH1-like protein negative elongation factor proteins C and D

Disease

- [Genetic Predisposition to Disease](#)
- [Schizophrenia](#)