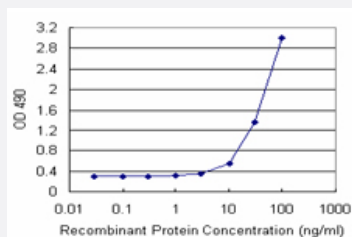


NOP16 (Human) Matched Antibody Pair

Catalog # H00051491-AP11

Size 1 Set

Applications



Sandwich ELISA detection sensitivity ranging from 3 ng/ml to 100 ng/ml.

Specification

Product Description	This antibody pair set comes with a matched antibody pair to detect and quantify the protein level of human NOP16.
Reactivity	Human
Interspecies Antigen Sequence	Mouse (93); Rat (93)
Quality Control Testing	Standard curve using recombinant protein (H00051491-P01) as an analyte. Sandwich ELISA detection sensitivity ranging from 3 ng/ml to 100 ng/ml.
Supplied Product	Antibody pair set content: 1. Capture antibody: rabbit MaxPab® affinity purified polyclonal anti-NOP16 (100 ug) 2. Detection antibody: mouse monoclonal anti-NOP16, IgG1 Kappa (20 ug) *Reagents are sufficient for at least 1-2 x 96 well plates using recommended protocols.
Storage Instruction	Store reagents of the antibody pair set at -20°C or lower. Please aliquot to avoid repeated freeze thaw cycle. Reagents should be returned to -20°C storage immediately after use.

Applications

- ELISA Pair (Recombinant protein)

[Protocol Download](#)

Gene Info — NOP16

Entrez GeneID	51491
Gene Name	NOP16
Gene Alias	HSPC111, HSPC185
Gene Description	NOP16 nucleolar protein homolog (yeast)
Gene Ontology	Hyperlink
Gene Summary	NOP16 is transcriptionally regulated by c-Myc (MYC; MIM 190080), upregulated in breast cancer, and overexpression is associated with poor patient survival (Butt et al., 2008).[supplied by OMIM]
Other Designations	HBV pre-S2 trans-regulated protein 3 NOP16 nucleolar protein homolog nucleolar protein 16 homolog