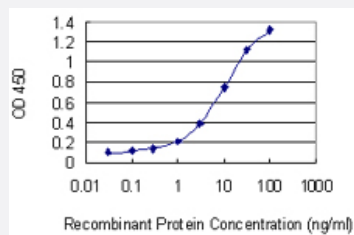


# NAT8B monoclonal antibody (M03), clone 3B6

Catalog # H00051471-M03

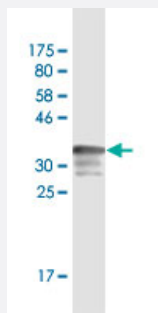
Size 100 ug

## Applications



### Sandwich ELISA (Recombinant protein)

Detection limit for recombinant GST tagged NAT8B is 0.3 ng/ml as a capture antibody.



Western Blot detection against Immunogen (36.41 KDa) .

## Specification

### Product Description

Mouse monoclonal antibody raised against a partial recombinant NAT8B.

### Immunogen

NAT8B (NP\_057431.1, 83 a.a. ~ 179 a.a) partial recombinant protein with GST tag. MW of the GST tag alone is 26 KDa.

### Sequence

TRYVDIALRTDMSDITKSYLSECGSCFWVGEESEKVVGTVGALPVDDPTLREKRLQLFHLSDNE  
HRGQGIAKALVRTVLQFARDQGYSEVVLDTSN

### Host

Mouse

### Reactivity

Human

Interspecies Antigen Sequence	Rat (71)
Isotype	IgG2a Kappa
Quality Control Testing	Antibody Reactive Against Recombinant Protein. Western Blot detection against Immunogen (36.41 KDa) .
Storage Buffer	In 1x PBS, pH 7.4
Storage Instruction	Store at -20°C or lower. Aliquot to avoid repeated freezing and thawing.

## Applications

- Western Blot (Recombinant protein)

[Protocol Download](#)

- Sandwich ELISA (Recombinant protein)

Detection limit for recombinant GST tagged NAT8B is 0.3 ng/ml as a capture antibody.

[Protocol Download](#)

- ELISA

## Gene Info — NAT8B

Entrez GeneID	<a href="#">51471</a>
GeneBank Accession#	<a href="#">NM_016347</a>
Protein Accession#	<a href="#">NP_057431.1</a>
Gene Name	NAT8B
Gene Alias	CML2, Hcml2, MGC97061, NAT8BP
Gene Description	N-acetyltransferase 8B (GCN5-related, putative, gene/pseudogene)
Omim ID	<a href="#">608190</a>
Gene Ontology	<a href="#">Hyperlink</a>

**Gene Summary**

The protein encoded by this gene is highly similar to the N-acetyltransferase 8 (NAT8) gene product, which is a kidney and liver protein with homology to bacterial acetyltransferases involved in drug resistance. This gene is localized on chromosome 2 in the vicinity of the NAT8 gene and may represent a pseudogene of NAT8. This gene contains two polymorphic nonsense mutations that disrupt the active site of the protein. The full-length product of this gene contains a complete acetyltransferase domain and is identical in length to NAT8. [provided by RefSeq]

**Other Designations**

N-acetyltransferase 8B|N-acetyltransferase 8B (gene/pseudogene)|N-acetyltransferase Camello 2