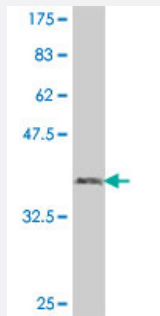


UBE2J1 polyclonal antibody (A01)

Catalog # H00051465-A01

Size 50 uL

Applications



Western Blot detection against Immunogen (38.21 KDa) .

Specification

Product Description	Mouse polyclonal antibody raised against a partial recombinant UBE2J1.
Immunogen	UBE2J1 (NP_003329, 9 a.a. ~ 118 a.a) partial recombinant protein with GST tag.
Sequence	SPAVKRLMKAAELKDPTDHYHAQPLEDNLFQWHFTVRGPPDSDFDGGVYHGRVLPPEYPMKP PSIILLTANGRFQVGGKICLSISGHHPETWQPSWSIRTALLAIGF
Host	Mouse
Reactivity	Human
Interspecies Antigen Sequence	Mouse (100); Rat (100)
Quality Control Testing	Antibody Reactive Against Recombinant Protein. Western Blot detection against Immunogen (38.21 KDa) .
Storage Buffer	50 % glycerol
Storage Instruction	Store at -20°C or lower. Aliquot to avoid repeated freezing and thawing.

Applications

- Western Blot (Recombinant protein)

[Protocol Download](#)

- ELISA

Gene Info — UBE2J1

Entrez GeneID [51465](#)

GeneBank Accession# [NM_016021](#)

Protein Accession# [NP_003329](#)

Gene Name UBE2J1

Gene Alias CGI-76, HSPC153, HSPC205, HSU93243, MGC12555, NCUBE1, Ubc6p

Gene Description ubiquitin-conjugating enzyme E2, J1 (UBC6 homolog, yeast)

Gene Ontology [Hyperlink](#)

Gene Summary The modification of proteins with ubiquitin is an important cellular mechanism for targeting abnormal or short-lived proteins for degradation. Ubiquitination involves at least three classes of enzymes: ubiquitin-activating enzymes, or E1s, ubiquitin-conjugating enzymes, or E2s, and ubiquitin-protein ligases, or E3s. This gene encodes a member of the E2 ubiquitin-conjugating enzyme family. This enzyme is located in the membrane of the endoplasmic reticulum (ER) and may contribute to quality control ER-associated degradation by the ubiquitin-proteasome system. [provided by RefSeq]

Other Designations OTTHUMP00000016852|non-canonical ubiquitin conjugating enzyme 1|ubiquitin-conjugating enzyme E2, J1

Pathway

- [Ubiquitin mediated proteolysis](#)