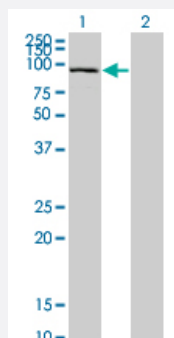


SFMBT1 monoclonal antibody (M02), clone 2A1

Catalog # H00051460-M02

Size 100 ug

Applications

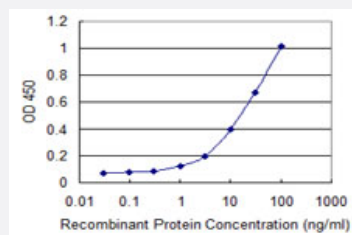


Western Blot (Transfected lysate)

Western Blot analysis of SFMBT1 expression in transfected 293T cell line by SFMBT1 monoclonal antibody (M02), clone 2A1.

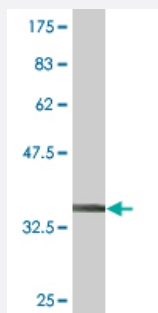
Lane 1: SFMBT1 transfected lysate (98.141 KDa).

Lane 2: Non-transfected lysate.



Sandwich ELISA (Recombinant protein)

Detection limit for recombinant GST tagged SFMBT1 is 0.3 ng/ml as a capture antibody.



Western Blot detection against Immunogen (37.51 KDa) .

Specification

Product Description

Mouse monoclonal antibody raised against a partial recombinant SFMBT1.

Immunogen	SFMBT1 (NP_057413, 121 a.a. ~ 230 a.a) partial recombinant protein with GST tag. MW of the GST tag alone is 26 KDa.
Sequence	EGIRDKVSDWDEFLRQTLIGACSPVPVPLEGLRNGRNPLDLIAPGSRLECQAFQDSLSTWIVTVVE NIGGRLKLRYEGLSSDNYEHWLYLDPFLHHVGWAAQQGYELQ
Host	Mouse
Reactivity	Human
Interspecies Antigen Sequence	Mouse (86); Rat (85)
Isotype	IgG2a Kappa
Quality Control Testing	Antibody Reactive Against Recombinant Protein. Western Blot detection against Immunogen (37.51 KDa) .
Storage Buffer	In 1x PBS, pH 7.4
Storage Instruction	Store at -20°C or lower. Aliquot to avoid repeated freezing and thawing.

Applications

- Western Blot (Transfected lysate)

Western Blot analysis of SFMBT1 expression in transfected 293T cell line by SFMBT1 monoclonal antibody (M02), clone 2A1.

Lane 1: SFMBT1 transfected lysate(98.141 KDa).

Lane 2: Non-transfected lysate.

[Protocol Download](#)

- Western Blot (Recombinant protein)

[Protocol Download](#)

- Sandwich ELISA (Recombinant protein)

Detection limit for recombinant GST tagged SFMBT1 is 0.3 ng/ml as a capture antibody.

[Protocol Download](#)

- ELISA

Gene Info — SFMBT1

Entrez GeneID	51460
GeneBank Accession#	NM_016329
Protein Accession#	NP_057413
Gene Name	SFMBT1
Gene Alias	DKFZp434L243, RU1, SFMBT
Gene Description	Scm-like with four mbt domains 1
Omim ID	607319
Gene Ontology	Hyperlink
Gene Summary	This gene shares high similarity with the Drosophila Scm (sex comb on midleg) gene. It encodes a protein which contains four malignant brain tumor repeat (mbt) domains and may be involved in antigen recognition. Several alternative splice variants have been characterized. [provided by Ref Seq]
Other Designations	Scm-related gene containing four mbt domains Scm-related gene product containing four mbt domains