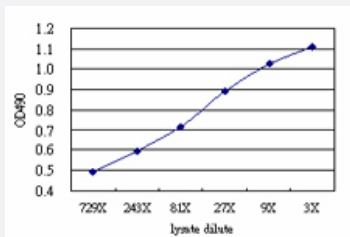


SFMBT1 (Human) Matched Antibody Pair

Catalog # H00051460-AP51 Size 1 Set

Applications



Sandwich ELISA detection sensitivity ranging from approximately 243x to 3x dilution of the SFMBT1 293T overexpression lysate (non-denatured).

Specification

Product Description	This antibody pair set comes with a matched antibody pair to detect and quantify the protein level of human SFMBT1.
Reactivity	Human
Interspecies Antigen Sequence	Mouse (88); Rat (88)
Quality Control Testing	Standard curve using SFMBT1 293T overexpression lysate (non-denatured) as an analyte. Sandwich ELISA detection sensitivity ranging from approximately 243x to 3x dilution of the SFMBT1 293T overexpression lysate (non-denatured).
Supplied Product	Antibody pair set content: 1. Capture antibody: mouse monoclonal anti-SFMBT1 (100 ug) 2. Detection antibody: rabbit purified polyclonal anti-SFMBT1 (50 ug) *Reagents are sufficient for at least 3-5 x 96 well plates using recommended protocols.
Storage Instruction	Store reagents of the antibody pair set at -20°C or lower. Please aliquot to avoid repeated freeze thaw cycle. Reagents should be returned to -20°C storage immediately after use.

Applications

- ELISA Pair (Transfected lysate)

[Protocol Download](#)

Gene Info — SFMBT1

Entrez GeneID	51460
---------------	-----------------------

Gene Name	SFMBT1
-----------	--------

Gene Alias	DKFZp434L243, RU1, SFMBT
------------	--------------------------

Gene Description	Scm-like with four mbt domains 1
------------------	----------------------------------

Omim ID	607319
---------	------------------------

Gene Ontology	Hyperlink
---------------	---------------------------

Gene Summary	This gene shares high similarity with the Drosophila Scm (sex comb on midleg) gene. It encodes a protein which contains four malignant brain tumor repeat (mbt) domains and may be involved in antigen recognition. Several alternative splice variants have been characterized. [provided by Ref Seq]
--------------	--

Other Designations	Scm-related gene containing four mbt domains Scm-related gene product containing four mbt domains
--------------------	---