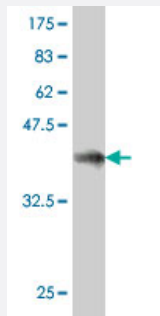


GULP1 polyclonal antibody (A01)

Catalog # H00051454-A01

Size 50 uL

Applications



Western Blot detection against Immunogen (37 KDa) .

Specification

Product Description	Mouse polyclonal antibody raised against a partial recombinant GULP1.
Immunogen	GULP1 (AAH01103, 1 a.a. ~ 100 a.a) partial recombinant protein with GST tag.
Sequence	MNRAFSRKDKTWMHTPEALSKHFIPYNAKFLGSTVEQPKGTEVV RDAVRKLK FARHIKKSEG QKIPKVELQISYGVKILEPKTKEVQHNCQLHRISF
Host	Mouse
Reactivity	Human
Interspecies Antigen Sequence	Mouse (99); Rat (97)
Quality Control Testing	Antibody Reactive Against Recombinant Protein. Western Blot detection against Immunogen (37 KDa) .
Storage Buffer	50 % glycerol
Storage Instruction	Store at -20°C or lower. Aliquot to avoid repeated freezing and thawing.

Applications

- Western Blot (Recombinant protein)

[Protocol Download](#)

- ELISA

Gene Info — GULP1

Entrez GeneID [51454](#)

GeneBank Accession# [BC001103](#)

Protein Accession# [AAH01103](#)

Gene Name GULP1

Gene Alias CED-6, CED6, FLJ31156, GULP

Gene Description GULP, engulfment adaptor PTB domain containing 1

Omim ID [608165](#)

Gene Ontology [Hyperlink](#)

Gene Summary The prompt clearance of cells undergoing apoptosis is critical during embryonic development, normal tissue turnover, inflammation, and autoimmunity. CED6 is an evolutionarily conserved adaptor protein required for efficient engulfment of apoptotic cells by phagocytes.[supplied by OMIM]

Other Designations PTB domain adaptor protein CED-6|engulfment adapter protein

Disease

- [Schizophrenia](#)