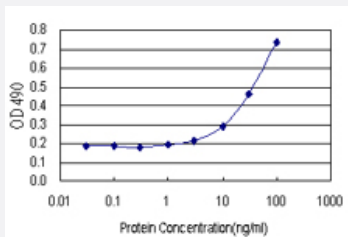


# PRRX2 (Human) Matched Antibody Pair

Catalog # H00051450-AP21

Size 1 Set

## Applications



Sandwich ELISA detection sensitivity ranging from 3 ng/ml to 100 ng/ml.

## Specification

<b>Product Description</b>	This antibody pair set comes with a matched antibody pair to detect and quantify the protein level of human PRRX2.
<b>Reactivity</b>	Human
<b>Interspecies Antigen Sequence</b>	Mouse (89); Rat (90)
<b>Quality Control Testing</b>	Standard curve using recombinant protein ( H00051450-P01 ) as an analyte. Sandwich ELISA detection sensitivity ranging from 3 ng/ml to 100 ng/ml.
<b>Supplied Product</b>	Antibody pair set content: 1. Capture antibody: rabbit MaxPab® affinity purified polyclonal anti-PRRX2 (100 ug) 2. Detection antibody: mouse purified polyclonal anti-PRRX2 (20 ug) *Reagents are sufficient for at least 1-2 x 96 well plates using recommended protocols.
<b>Storage Instruction</b>	Store reagents of the antibody pair set at -20°C or lower. Please aliquot to avoid repeated freeze thaw cycle. Reagents should be returned to -20°C storage immediately after use.

## Applications

- [ELISA Pair \(Recombinant protein\)](#)

[Protocol Download](#)

## Gene Info — PRRX2

**Entrez GeneID** [51450](#)

**Gene Name** PRRX2

**Gene Alias** MGC19843, PMX2, PRX2

**Gene Description** paired related homeobox 2

**Omim ID** [604675](#)

**Gene Ontology** [Hyperlink](#)

**Gene Summary** The DNA-associated protein encoded by this gene is a member of the paired family of homeobox proteins. Expression is localized to proliferating fetal fibroblasts and the developing dermal layer, with downregulated expression in adult skin. Increases in expression of this gene during fetal but not adult wound healing suggest a possible role in mechanisms that control mammalian dermal regeneration and prevent formation of scar response to wounding. The expression patterns provide evidence consistent with a role in fetal skin development and a possible role in cellular proliferation. [provided by RefSeq]

**Other Designations** OTTHUMP00000022344|paired mesoderm homeobox protein 2|paired-like homeodomain protein PRX2|predicted NUP98/PRRX2 fusion protein

## Disease

- [Cleft Lip](#)
- [Cleft Palate](#)