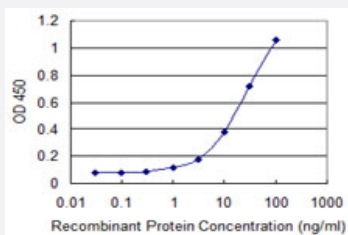


IP6K2 monoclonal antibody (M04), clone 1C6

Catalog # H00051447-M04

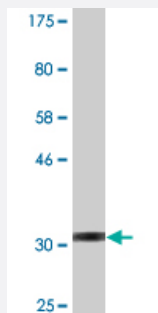
Size 100 ug

Applications



Sandwich ELISA (Recombinant protein)

Detection limit for recombinant GST tagged IP6K2 is 0.3 ng/ml as a capture antibody.



Western Blot detection against Immunogen (33.44 KDa) .

Specification

Product Description

Mouse monoclonal antibody raised against a partial recombinant IP6K2.

Immunogen

IP6K2 (NP_001005912.1, 1 a.a. ~ 70 a.a) partial recombinant protein with GST tag. MW of the GST tag alone is 26 KDa.

Sequence

MSPAFRAMDVEPRAKGVLLPEFVHQVGGHSCVLRFNETTLCPLVPREHQFYETLPAEMRKFTPQYKGV

Host

Mouse

Reactivity

Human

Interspecies Antigen Sequence	Mouse (93); Rat (94)
Isotype	IgG2a Kappa
Quality Control Testing	Antibody Reactive Against Recombinant Protein. Western Blot detection against Immunogen (33.44 KDa) .
Storage Buffer	In 1x PBS, pH 7.4
Storage Instruction	Store at -20°C or lower. Aliquot to avoid repeated freezing and thawing.

Applications

- Western Blot (Recombinant protein)

[Protocol Download](#)

- Sandwich ELISA (Recombinant protein)

Detection limit for recombinant GST tagged IP6K2 is 0.3 ng/ml as a capture antibody.

[Protocol Download](#)

- ELISA

Gene Info — IP6K2

Entrez GeneID	51447
GeneBank Accession#	NM_001005912
Protein Accession#	NP_001005912.1
Gene Name	IP6K2
Gene Alias	IHPK2, PiUS
Gene Description	inositol hexakisphosphate kinase 2
Omim ID	606992
Gene Ontology	Hyperlink

Gene Summary

This gene encodes a protein that belongs to the inositol phosphokinase (IPK) family. This protein is likely responsible for the conversion of inositol hexakisphosphate (InsP6) to diphosphoinositol pentakisphosphate (InsP7/PP-InsP5). It may also convert 1,3,4,5,6-pentakisphosphate (InsP5) to P-P-InsP4 and affect the growth suppressive and apoptotic activities of interferon-beta in some ovarian cancers. Alternative splicing results in multiple transcript variants encoding different isoforms. [provided by RefSeq]

Other Designations

ATP:1D-myo-inositol-hexakisphosphate phosphotransferase|OTTHUMP00000164824|Pi uptake stimulator|inositol hexaphosphate kinase 2|insP6 kinase 2