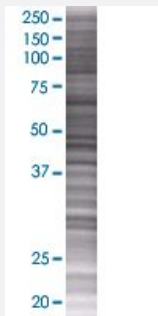


MAGEC2 293T Cell Transient Overexpression Lysate(Denatured)

Catalog # H00051438-T01

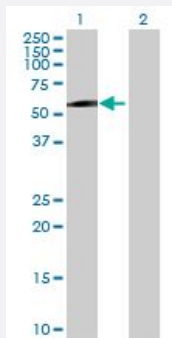
Size 100 uL

Applications



SDS-PAGE Gel

MAGEC2 transfected lysate.



Western Blot

Lane 1: MAGEC2 transfected lysate (41.2 KDa)

Lane 2: Non-transfected lysate.

Specification

Transfected Cell Line 293T

Plasmid pCMV-MAGEC2 full-length

Host Human

Theoretical MW (kDa) 41.2

Quality Control Testing Transient overexpression cell lysate was tested with Anti-MAGEC2 antibody ([H00051438-B01](#)) by Western Blots.
SDS-PAGE Gel
MAGEC2 transfected lysate.
Western Blot
Lane 1: MAGEC2 transfected lysate (41.2 KDa)
Lane 2: Non-transfected lysate.

Storage Buffer

1X Sample Buffer (50 mM Tris-HCl, 2% SDS, 10% glycerol, 300 mM 2-mercaptoethanol, 0.01% Bromophenol blue)

Storage Instruction

Store at -80°C. Aliquot to avoid repeated freezing and thawing.

Applications

- Western Blot

Gene Info — MAGEC2

Entrez GeneID[51438](#)**GeneBank Accession#**[NM_016249.2](#)**Protein Accession#**[NP_057333.1](#)**Gene Name**

MAGEC2

Gene Alias

CT10, HCA587, MAGEE1, MGC13377

Gene Description

melanoma antigen family C, 2

Omim ID[300468](#)**Gene Ontology**[Hyperlink](#)**Gene Summary**

This gene is related to members of the MAGEC gene family. It is not expressed in normal tissues, except for testis, and is expressed in tumors of various histological types. This gene and the MAGEC genes are clustered on chromosome Xq26-q27. [provided by RefSeq]

Other Designations

MAGE-C2 antigen|OTTHUMP00000024186|cancer-testis antigen CT10|hepatocellular cancer antigen 587|melanoma antigen, family E, 1 protein|melanoma antigen, family E, 1, cancer/testis specific|melanoma-associated antigen E1