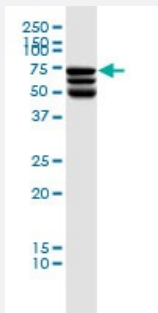


DDX41 monoclonal antibody (M01), clone 2F4

Catalog # H00051428-M01

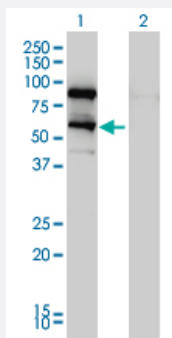
Size 100 ug

Applications



Western Blot (Cell lysate)

DDX41 monoclonal antibody (M01), clone 2F4. Western Blot analysis of DDX41 expression in HeLa.

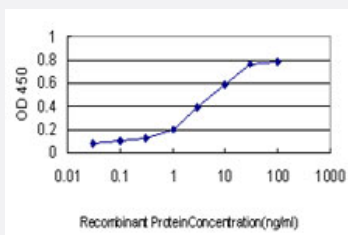


Western Blot (Transfected lysate)

Western Blot analysis of DDX41 expression in transfected 293T cell line by DDX41 monoclonal antibody (M01), clone 2F4.

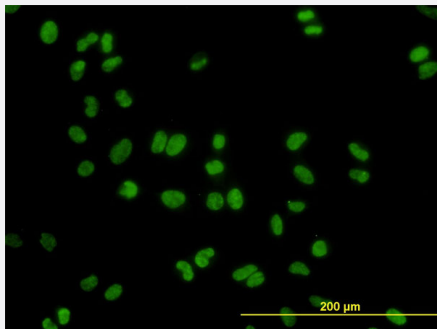
Lane 1: DDX41 transfected lysate(70 KDa).

Lane 2: Non-transfected lysate.



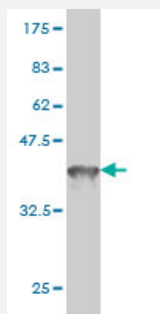
Sandwich ELISA (Recombinant protein)

Detection limit for recombinant GST tagged DDX41 is approximately 0.3ng/ml as a capture antibody.



Immunofluorescence

Immunofluorescence of monoclonal antibody to DDX41 on HeLa cell. [antibody concentration 10 ug/ml]



Western Blot detection against Immunogen (36.74 KDa) .

Specification

Product Description	Mouse monoclonal antibody raised against a partial recombinant DDX41.
Immunogen	DDX41 (NP_057306, 523 a.a. ~ 622 a.a) partial recombinant protein with GST tag. MW of the GST tag alone is 26 KDa.
Sequence	TGRSGNTGIATTFINKACDESVLMDLKALLLEAKQKVPPVLQVLHCGDESMLDIGGERGCAFCGG LGHRITDCPKLEAMQTKQVSNIGRKDYLAHSSMDF
Host	Mouse
Reactivity	Human
Interspecies Antigen Sequence	Mouse (100); Rat (100)
Isotype	IgG1 Kappa
Quality Control Testing	Antibody Reactive Against Recombinant Protein. Western Blot detection against Immunogen (36.74 KDa) .
Storage Buffer	In 1x PBS, pH 7.4
Storage Instruction	Store at -20°C or lower. Aliquot to avoid repeated freezing and thawing.

Applications

- Western Blot (Cell lysate)

DDX41 monoclonal antibody (M01), clone 2F4. Western Blot analysis of DDX41 expression in HeLa.

[Protocol Download](#)

- Western Blot (Transfected lysate)

Western Blot analysis of DDX41 expression in transfected 293T cell line by DDX41 monoclonal antibody (M01), clone 2F4.

Lane 1: DDX41 transfected lysate(70 KDa).

Lane 2: Non-transfected lysate.

[Protocol Download](#)

- Western Blot (Recombinant protein)

[Protocol Download](#)

- Sandwich ELISA (Recombinant protein)

Detection limit for recombinant GST tagged DDX41 is approximately 0.3ng/ml as a capture antibody.

[Protocol Download](#)

- ELISA

- Immunofluorescence

Immunofluorescence of monoclonal antibody to DDX41 on HeLa cell. [antibody concentration 10 ug/ml]

Gene Info — DDX41

Entrez GeneID	51428
---------------	-----------------------

GeneBank Accession#	NM_016222
---------------------	---------------------------

Protein Accession#	NP_057306
--------------------	---------------------------

Gene Name	DDX41
-----------	-------

Gene Alias	ABS, MGC8828
------------	--------------

Gene Description	DEAD (Asp-Glu-Ala-Asp) box polypeptide 41
------------------	---

Omim ID [608170](#)

Gene Ontology [Hyperlink](#)

Gene Summary

DEAD box proteins, characterized by the conserved motif Asp-Glu-Ala-Asp (DEAD), are putative RNA helicases. They are implicated in a number of cellular processes involving alteration of RNA secondary structure, such as translation initiation, nuclear and mitochondrial splicing, and ribosome and spliceosome assembly. Based on their distribution patterns, some members of the DEAD box protein family are believed to be involved in embryogenesis, spermatogenesis, and cellular growth and division. This gene encodes a member of this family. The function of this member has not been determined. Based on studies in Drosophila, the abstract gene is widely required during post-transcriptional gene expression. [provided by RefSeq]

Other Designations 2900024F02Rik|DEAD-box protein abstract|putative RNA helicase

Publication Reference

- [High-Throughput Screening to Identify Inhibitors of DEAD Box Helicase DDX41.](#)

Yoneyama-Hirozane M, Kondo M, Matsumoto SI, Morikawa-Okai A, Morishita D, Nakanishi A, Kawamoto T, Nakayama M.
Amino Acids 2017 Apr; 2472555217705952.

Application: WB-Re, Recombinant protein

- [Structural and Functional Analysis of DDX41: a bispecific immune receptor for DNA and cyclic dinucleotide.](#)

Omura H, Oikawa D, Nakane T, Kato M, Ishii R, Ishitani R, Tokunaga F, Nureki O.
Scientific Reports 2016 Oct; 6:34756.

Application: WB-Tr, Human, Human monocyte THP1 cells