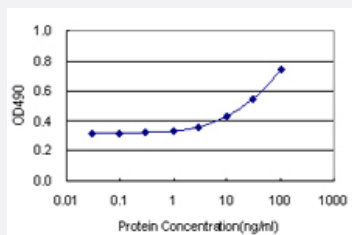


TEX264 (Human) Matched Antibody Pair

Catalog # H00051368-AP11

Size 1 Set

Applications



Sandwich ELISA detection sensitivity ranging from 3 ng/ml to 100 ng/ml.

Specification

Product Description	This antibody pair set comes with a matched antibody pair to detect and quantify the protein level of human TEX264.
Reactivity	Human
Interspecies Antigen Sequence	Mouse (83); Rat (81)
Quality Control Testing	Standard curve using recombinant protein (H00051368-P01) as an analyte. Sandwich ELISA detection sensitivity ranging from 3 ng/ml to 100 ng/ml.
Supplied Product	Antibody pair set content: 1. Capture antibody: rabbit MaxPab® affinity purified polyclonal anti-TEX264 (100 ug) 2. Detection antibody: mouse monoclonal anti-TEX264, IgG2b Kappa (20 ug) *Reagents are sufficient for at least 1-2 x 96 well plates using recommended protocols.
Storage Instruction	Store reagents of the antibody pair set at -20°C or lower. Please aliquot to avoid repeated freeze thaw cycle. Reagents should be returned to -20°C storage immediately after use.

Applications

- ELISA Pair (Recombinant protein)

[Protocol Download](#)

Gene Info — TEX264

Entrez GeneID	51368
Gene Name	TEX264
Gene Alias	DKFZp451H0417, FLJ13935, SIG11, ZSIG11
Gene Description	testis expressed 264
Gene Ontology	Hyperlink
Other Designations	putative secreted protein ZSIG11 testis expressed gene 264 testis expressed sequence 264