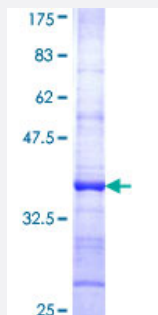


# HOOK1 (Human) Recombinant Protein (Q01)

Catalog # H00051361-Q01

Size 25 ug, 10 ug

## Applications



## Specification

<b>Product Description</b>	Human HOOK1 partial ORF ( NP_056972, 632 a.a. - 728 a.a.) recombinant protein with GST-tag at N-terminal.
<b>Sequence</b>	MLLRKQLAEKERRIEILESECKVAKFRDYEEKLIVSAWYNKSLAFQKLGME SRLVSGGGACSDTG ACTPARSFLAQQRHITNTRRNL SVKVPATTSD
<b>Host</b>	Wheat Germ (in vitro)
<b>Theoretical MW (kDa)</b>	36.41
<b>Interspecies Antigen Sequence</b>	Mouse (92); Rat (92)
<b>Preparation Method</b>	<a href="#">in vitro wheat germ expression system</a>
<b>Purification</b>	Glutathione Sepharose 4 Fast Flow
<b>Quality Control Testing</b>	12.5% SDS-PAGE Stained with Coomassie Blue.
<b>Storage Buffer</b>	50 mM Tris-HCl, 10 mM reduced Glutathione, pH=8.0 in the elution buffer.
<b>Storage Instruction</b>	Store at -80°C. Aliquot to avoid repeated freezing and thawing.
<b>Note</b>	Best use within three months from the date of receipt of this protein.

## Applications

- Enzyme-linked Immunoabsorbent Assay
- Western Blot (Recombinant protein)
- Antibody Production
- Protein Array

## Gene Info — HOOK1

Entrez GeneID [51361](#)

GeneBank Accession# [NM\\_015888](#)

Protein Accession# [NP\\_056972](#)

Gene Name HOOK1

Gene Alias HK1, MGC10642

Gene Description hook homolog 1 (Drosophila)

Omim ID [607820](#)

Gene Ontology [Hyperlink](#)

**Gene Summary** This gene encodes a member of the hook family of coiled-coil proteins, which bind to microtubule s and organelles through their N- and C-terminal domains, respectively. The encoded protein local izes to discrete punctuate subcellular structures, and interacts with several members of the Rab G TPase family involved in endocytosis. It is thought to link endocytic membrane trafficking to the mi crotubule cytoskeleton. Several alternatively spliced transcript variants have been identified, but th e full-length nature of some of these variants has not been determined. [provided by RefSeq

**Other Designations** OTTHUMP00000010548|hook homolog 1

## Disease

- [Tobacco Use Disorder](#)