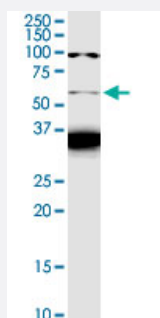


FZR1 monoclonal antibody (M02), clone 4C4

Catalog # H00051343-M02

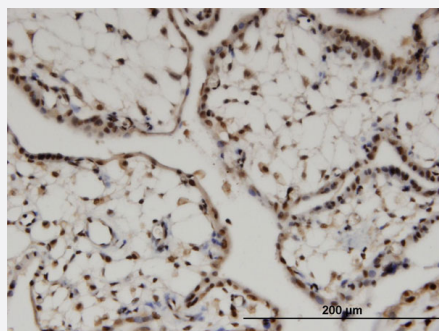
Size 100 ug

Applications



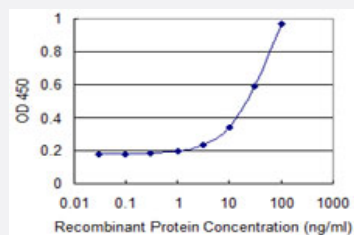
Western Blot (Cell lysate)

FZR1 monoclonal antibody (M02), clone 4C4. Western Blot analysis of FZR1 expression in HeLa S3 NE.



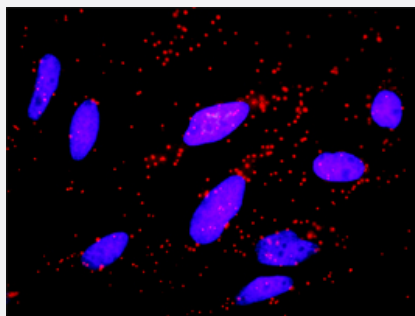
Immunohistochemistry (Formalin/PFA-fixed paraffin-embedded sections)

Immunoperoxidase of monoclonal antibody to FZR1 on formalin-fixed paraffin-embedded human placenta. [antibody concentration 3 ug/ml]



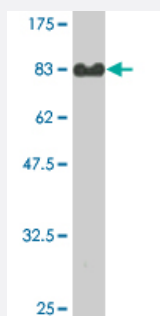
Sandwich ELISA (Recombinant protein)

Detection limit for recombinant GST tagged FZR1 is 1 ng/ml as a capture antibody.



In situ Proximity Ligation Assay (Cell)

Proximity Ligation Analysis of protein-protein interactions between CCNB1 and FZR1. HeLa cells were stained with anti-CCNB1 rabbit purified polyclonal 1:1200 and anti-FZR1 mouse monoclonal antibody 1:50. Each red dot represents the detection of protein-protein interaction complex, and nuclei were counterstained with DAPI (blue).



Western Blot detection against Immunogen (80.08 KDa) .

Specification

Product Description	Mouse monoclonal antibody raised against a full-length recombinant FZR1.
Immunogen	FZR1 (AAH13413.1, 1 a.a. ~ 493 a.a) full-length recombinant protein with GST tag. MW of the GST tag alone is 26 KDa.
Sequence	MDQDYERRLLRQVIQNENTMPRVTEMRRRLTPASSPVSSPSKHGDRFIPSRAGANWSVNFHRIN ENEKSPSQNRKAKDATSDNGKDGLAYSALLKNELLGAGIEKVQDPQTEDRRLQPSTPEKKGLFT YSLSTKRSSPDDGNDVSPYSLSPVSNKSQKLLRSPRKPTRKISKIPFKVLDAPELQDDFYLNLD WSSLNVLSVGLGTCVYLWSACTSQVTRLCDLSVEGDSVTSVGWSEGRNLVAVGTHKGFVQWMD AAAGKKLSMLEGHTARVGALAWNAEQLSSGSRDRMILQRDIRTPPLQSERRLQGHRQEVCGLK WSTDHQLLASGGNDNKLLVWNHSSLSPVQQYTEHLAAVKAIAWSPHQHGLLASGGGTADRCIRF WNTLTGQPLQCIDTGSQVCNLAWSKHANELVSTHGYSQYQILVWKYPSLTQVAKLTGHSYRVLYL AMSPDGEAVTGAGDETLRFWNVFSKTRSTKESVSVLNLVTRIR
Host	Mouse
Reactivity	Human
Interspecies Antigen Sequence	Mouse (97); Rat (97)
Isotype	IgG2a Kappa
Quality Control Testing	Antibody Reactive Against Recombinant Protein. Western Blot detection against Immunogen (80.08 KDa) .

Storage Buffer

In 1x PBS, pH 7.4

Storage Instruction

Store at -20°C or lower. Aliquot to avoid repeated freezing and thawing.

Applications

- Western Blot (Cell lysate)

FZR1 monoclonal antibody (M02), clone 4C4. Western Blot analysis of FZR1 expression in Hela S3 NE.

[Protocol Download](#)

- Western Blot (Recombinant protein)

[Protocol Download](#)

- Immunohistochemistry (Formalin/PFA-fixed paraffin-embedded sections)

Immunoperoxidase of monoclonal antibody to FZR1 on formalin-fixed paraffin-embedded human placenta. [antibody concentration 3 ug/ml]

[Protocol Download](#)

- Sandwich ELISA (Recombinant protein)

Detection limit for recombinant GST tagged FZR1 is 1 ng/ml as a capture antibody.

[Protocol Download](#)

- ELISA

- *In situ* Proximity Ligation Assay (Cell)

Proximity Ligation Analysis of protein-protein interactions between CCNB1 and FZR1. HeLa cells were stained with anti-CCNB1 rabbit purified polyclonal 1:1200 and anti-FZR1 mouse monoclonal antibody 1:50. Each red dot represents the detection of protein-protein interaction complex, and nuclei were counterstained with DAPI (blue).

Gene Info — FZR1

Entrez GeneID[51343](#)**GeneBank Accession#**[BC013413](#)**Protein Accession#**[AAH13413.1](#)**Gene Name**

FZR1

Gene Alias	CDC20C, CDH1, FZR, FZR2, HCDH, HCDH1, KIAA1242
Gene Description	fizzy/cell division cycle 20 related 1 (Drosophila)
Omim ID	603619
Gene Ontology	Hyperlink
Other Designations	CDC20-like 1b Fzr1 protein fizzy-related protein

Pathway

- [Cell cycle](#)
- [Ubiquitin mediated proteolysis](#)