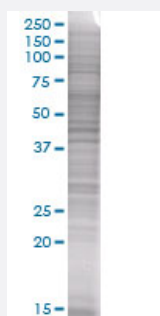


MS4A4A 293T Cell Transient Overexpression Lysate(Denatured)

Catalog # H00051338-T01

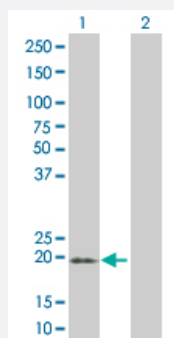
Size 100 uL

Applications



SDS-PAGE Gel

MS4A4A transfected lysate



Western Blot

Lane 1: MS4A4A transfected lysate (26.4 KDa).

Lane 2: Non-transfected lysate.

Specification

Transfected Cell Line 293T

Plasmid pCMV-MS4A4A full-length

Host Human

Theoretical MW (kDa) 26.4

Quality Control Testing Transient overexpression cell lysate was tested with Anti-MS4A4A antibody ([H00051338-B01](#)) by Western Blots.
SDS-PAGE Gel
MS4A4A transfected lysate
Western Blot
Lane 1: MS4A4A transfected lysate (26.4 KDa).
Lane 2: Non-transfected lysate.

Storage Buffer

1X Sample Buffer (50 mM Tris-HCl, 2% SDS, 10% glycerol, 300 mM 2-mercaptoethanol, 0.01% Bromophenol blue)

Storage Instruction

Store at -80°C. Aliquot to avoid repeated freezing and thawing.

Applications

- Western Blot

Gene Info — MS4A4A

Entrez GeneID[51338](#)**GeneBank Accession#**[BC020648](#)**Protein Accession#**[AAH20648](#)**Gene Name**

MS4A4A

Gene Alias

4SPAN1, CD20-L1, CD20L1, HDCME31P, MGC22311, MS4A4, MS4A7

Gene Description

membrane-spanning 4-domains, subfamily A, member 4

Omim ID[606547](#)**Gene Ontology**[Hyperlink](#)**Gene Summary**

This gene encodes a member of the membrane-spanning 4A gene family. Members of this nascent protein family are characterized by common structural features and similar intron/exon splice boundaries and display unique expression patterns among hematopoietic cells and nonlymphoid tissues. Alternative splicing of this gene results in several transcript variants; however, not all transcripts have been fully described. [provided by RefSeq]

Other Designations

Fc epsilon receptor beta subunit homolog|four-span transmembrane protein|membrane-spanning 4-domains, subfamily A, member 4A