

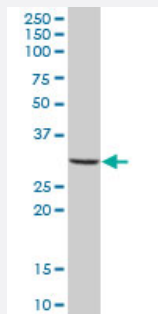
MaxPab®

MS4A4A purified MaxPab mouse polyclonal antibody (B01P)

Catalog # H00051338-B01P

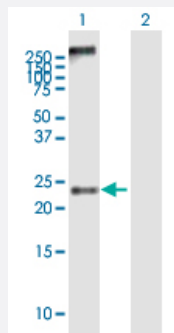
Size 50 ug

Applications



Western Blot (Tissue lysate)

MS4A4A MaxPab polyclonal antibody. Western Blot analysis of MS4A4A expression in human spleen.



Western Blot (Transfected lysate)

Western Blot analysis of MS4A4A expression in transfected 293T cell line ([H00051338-T01](#)) by MS4A4A MaxPab polyclonal antibody.

Lane 1: MS4A4A transfected lysate(26.4 KDa).

Lane 2: Non-transfected lysate.

Specification

Product Description	Mouse polyclonal antibody raised against a full-length human MS4A4A protein.
Immunogen	MS4A4A (AAH20648, 1 a.a. ~ 239 a.a) full-length human protein.
Sequence	MHQTYSRHRCPPEESTFSAAMTTMQGMEQAMPGAGPGVPQLGNMAVIHSHLWKGLQEFLKGE PKVLGVVQIL TALMSLSMGITMMCMASNTYGSNPISVYIGYTWGSVMFIISGSLSLAAGIRTTKGLVR GSLGMNITSSVLAASGILINTFSLAFYSFHHPYCNYGNSNNCHGTMSILMGLDGMVLLLSVLEFCIA VLSAFGCKVLCCTPGGVVLILPSHSHMAETASPTPLNEV
Host	Mouse
Reactivity	Human

Quality Control Testing	Antibody reactive against mammalian transfected lysate.
Storage Buffer	In 1x PBS, pH 7.4
Storage Instruction	Store at -20°C or lower. Aliquot to avoid repeated freezing and thawing.

Applications

- Western Blot (Tissue lysate)

MS4A4A MaxPab polyclonal antibody. Western Blot analysis of MS4A4A expression in human spleen.

[Protocol Download](#)

- Western Blot (Transfected lysate)

Western Blot analysis of MS4A4A expression in transfected 293T cell line ([H00051338-T01](#)) by MS4A4A MaxPab polyclonal antibody.

Lane 1: MS4A4A transfected lysate(26.4 KDa).

Lane 2: Non-transfected lysate.

[Protocol Download](#)

Gene Info — MS4A4A

Entrez GeneID	51338
GeneBank Accession#	BC020648
Protein Accession#	AAH20648
Gene Name	MS4A4A
Gene Alias	4SPAN1, CD20-L1, CD20L1, HDCME31P, MGC22311, MS4A4, MS4A7
Gene Description	membrane-spanning 4-domains, subfamily A, member 4
Omim ID	606547
Gene Ontology	Hyperlink

Gene Summary	This gene encodes a member of the membrane-spanning 4A gene family. Members of this nascent protein family are characterized by common structural features and similar intron/exon splice boundaries and display unique expression patterns among hematopoietic cells and nonlymphoid tissues. Alternative splicing of this gene results in several transcript variants; however, not all transcripts have been fully described. [provided by RefSeq]
--------------	---

Other Designations

Fc epsilon receptor beta subunit homolog|four-span transmembrane protein|membrane-spanning 4-domains, subfamily A, member 4A
