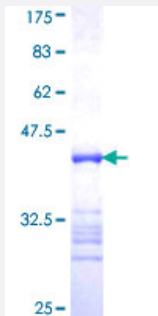


# ARMCX1 (Human) Recombinant Protein (Q01)

Catalog # H00051309-Q01

Size 25 ug, 10 ug

## Applications



## Specification

<b>Product Description</b>	Human ARM CX1 partial ORF ( NP_057692, 188 a.a. - 295 a.a.) recombinant protein with GST-tag at N-terminal.
<b>Sequence</b>	RRGKFNFYPYKIDDL SAPDLQKVLN ILERTNDPFIQEVALVTLGNNAAYSFNQNAIRELGGVPIAKLIK TKDPIIREKTYNALNNLSVNAENQGKIKTYISQVCDDT
<b>Host</b>	Wheat Germ (in vitro)
<b>Theoretical MW (kDa)</b>	37.62
<b>Interspecies Antigen Sequence</b>	Mouse (84)
<b>Preparation Method</b>	<a href="#">in vitro wheat germ expression system</a>
<b>Purification</b>	Glutathione Sepharose 4 Fast Flow
<b>Quality Control Testing</b>	12.5% SDS-PAGE Stained with Coomassie Blue.
<b>Storage Buffer</b>	50 mM Tris-HCl, 10 mM reduced Glutathione, pH=8.0 in the elution buffer.
<b>Storage Instruction</b>	Store at -80°C. Aliquot to avoid repeated freezing and thawing.
<b>Note</b>	Best use within three months from the date of receipt of this protein.

## Applications

- Enzyme-linked Immunoabsorbent Assay
- Western Blot (Recombinant protein)
- Antibody Production
- Protein Array

## Gene Info — ARMCX1

Entrez GeneID [51309](#)

GeneBank Accession# [NM\\_016608](#)

Protein Accession# [NP\\_057692](#)

Gene Name ARMCX1

Gene Alias ALEX1, DKFZp686P06199

Gene Description armadillo repeat containing, X-linked 1

Omim ID [300362](#)

Gene Ontology [Hyperlink](#)

**Gene Summary** This gene encodes a member of the ALEX family of proteins and may play a role in tumor suppression. The encoded protein contains a potential N-terminal transmembrane domain and two Armadillo (arm) repeats. Other proteins containing the arm repeat are involved in development, maintenance of tissue integrity, and tumorigenesis. This gene is closely localized with other family members, including ALEX2 and ALEX3, on the X chromosome. [provided by RefSeq]

**Other Designations** OTTHUMP00000023686|arm protein lost in epithelial cancers, X chromosome, 1