

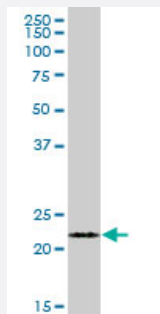
MaxPab®

# FKBP11 purified MaxPab mouse polyclonal antibody (B01P)

Catalog # H00051303-B01P

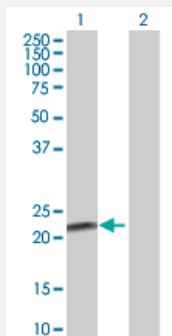
Size 50 ug

## Applications



### Western Blot (Tissue lysate)

FKBP11 MaxPab polyclonal antibody. Western Blot analysis of FKBP11 expression in human pancreas.



### Western Blot (Transfected lysate)

Western Blot analysis of FKBP11 expression in transfected 293T cell line ([H00051303-T01](#)) by FKBP11 MaxPab polyclonal antibody.

Lane 1: FKBP11 transfected lysate(22.11 KDa).

Lane 2: Non-transfected lysate.

## Specification

Product Description	Mouse polyclonal antibody raised against a full-length human FKBP11 protein.
Immunogen	FKBP11 (NP_057678.1, 1 a.a. ~ 201 a.a) full-length human protein.
Sequence	MTLRPSLLPLHLLLLLLLLSAAVCRAEAGLETESPVRTLQVETLVEPPEPCAEPAAFGDTLHHYTG SLVDGRIIDTSLTRDPLVIELGQKQVIPGLEQSLLDMCVGEKRRRIIPSHLAYGKRGFPSPADAV VQYDVELIALIRANYWLKLVKGILPLVGMAMVPALLGLIGYHLYRKANRPKVSKKKLKEEKRNKS KK
Host	Mouse
Reactivity	Human

Interspecies Antigen Sequence	Mouse (90); Rat (89)
Quality Control Testing	Antibody reactive against mammalian transfected lysate.
Storage Buffer	In 1x PBS, pH 7.4
Storage Instruction	Store at -20°C or lower. Aliquot to avoid repeated freezing and thawing.

## Applications

- Western Blot (Tissue lysate)

FKBP11 MaxPab polyclonal antibody. Western Blot analysis of FKBP11 expression in human pancreas.

[Protocol Download](#)

- Western Blot (Transfected lysate)

Western Blot analysis of FKBP11 expression in transfected 293T cell line ([H00051303-T01](#)) by FKBP11 MaxPab polyclonal antibody.

Lane 1: FKBP11 transfected lysate(22.11 kDa).

Lane 2: Non-transfected lysate.

[Protocol Download](#)

## Gene Info — FKBP11

Entrez GeneID	<a href="#">51303</a>
GeneBank Accession#	<a href="#">NM_016594.1</a>
Protein Accession#	<a href="#">NP_057678.1</a>
Gene Name	FKBP11
Gene Alias	FKBP19, MGC54182
Gene Description	FK506 binding protein 11, 19 kDa
Omim ID	<a href="#">610571</a>
Gene Ontology	<a href="#">Hyperlink</a>

**Gene Summary**

FKBP11 belongs to the FKBP family of peptidyl-prolyl cis/trans isomerases, which catalyze the folding of proline-containing polypeptides. The peptidyl-prolyl isomerase activity of FKBP proteins is inhibited by the immunosuppressant compounds FK506 and rapamycin (Rulten et al., 2006 [PubMed 16596453]).[supplied by OMIM]

**Other Designations**

-