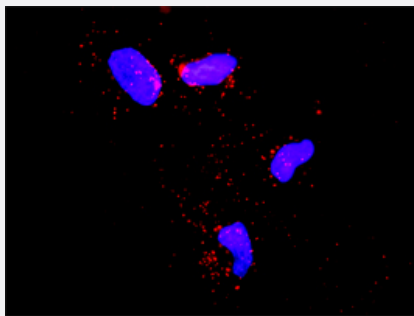


ECSIT monoclonal antibody (M01), clone 1B8

Catalog # H00051295-M01

Size 100 ug

Applications



In situ Proximity Ligation Assay (Cell)

Proximity Ligation Analysis of protein-protein interactions between SMURF1 and ECSIT. HeLa cells were stained with anti-SMURF1 rabbit purified polyclonal 1:1200 and anti-ECSIT mouse monoclonal antibody 1:50. Each red dot represents the detection of protein-protein interaction complex, and nuclei were counterstained with DAPI (blue).

Specification

Product Description	Mouse monoclonal antibody raised against a full length recombinant ECSIT.
Immunogen	ECSIT (AAH00193, 20 a.a. ~ 431 a.a) full-length recombinant protein with GST tag. MW of the GST tag alone is 26 KDa.
Sequence	TCGAALTGTSISQVPRRLPRGLHCSAAHSSEQSLVSPPEPRQRPTKALVPFEDLFGQAPGGERDKASFLQTVQKFAEHSVRKRGHIDFIYALRKMREYGVVERDLAVYNQLLNIFPKEVFRPRNIQRIFVHYPRQQECGIAVLEQMHGVMMPNKETEFLLIQIFGRKSYMLKLVRLLWFRPFMNVNPFVPVPRDLPPQDPVELAMFGLRHMEPDLSARVTYQVPLPKDSTGAADPPQPHIVGIQSPDQQAALARHNPARPVFVEGPFSLWLRNKCYYHILRADLLPPEEREVEETPEEWNLYYPMQLDLEYVRSGWDNYEFDINEVEEGPVFAMCMAGAHQDQATMAKWIQGLQETNPQLAQIPVVFRLAGSTRELQTSSAGLEEPPLPEDHQEEDDNLQRQQGQS
Host	Mouse
Reactivity	Human
Interspecies Antigen Sequence	Mouse (73); Rat (72)
Isotype	IgG2a Kappa
Quality Control Testing	Antibody Reactive Against Recombinant Protein.

Storage Buffer

In 1x PBS, pH 7.4

Storage Instruction

Store at -20°C or lower. Aliquot to avoid repeated freezing and thawing.

Applications

- ELISA
- *In situ* Proximity Ligation Assay (Cell)

Proximity Ligation Analysis of protein-protein interactions between SMURF1 and ECSIT. HeLa cells were stained with anti-SMURF1 rabbit purified polyclonal 1:1200 and anti-ECSIT mouse monoclonal antibody 1:50. Each red dot represents the detection of protein-protein interaction complex, and nuclei were counterstained with DAPI (blue).

Gene Info — ECSIT

Entrez GeneID [51295](#)**GeneBank Accession#** [BC000193](#)**Protein Accession#** [AAH00193](#)**Gene Name** ECSIT**Gene Alias** SITPEC**Gene Description** ECSIT homolog (Drosophila)**Omim ID** [608388](#)**Gene Ontology** [Hyperlink](#)

Other Designations evolutionarily conserved signaling intermediate in Toll pathway|likely ortholog of mouse signaling intermediate in Toll pathway|evolutionarily conserved|signaling intermediate in Toll pathway|evolutionarily conserved ortholog|signaling intermediate in Toll pathway

Pathway

- [MAPK signaling pathway](#)