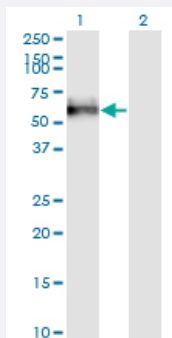


GOLM1 monoclonal antibody (M04), clone 3B10

Catalog # H00051280-M04

Size 100 ug

Applications

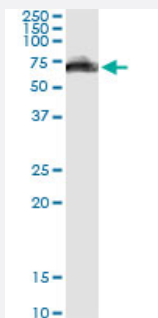


Western Blot (Transfected lysate)

Western Blot analysis of GOLM1 expression in transfected 293T cell line by GOLPH2 monoclonal antibody (M04), clone 3B10.

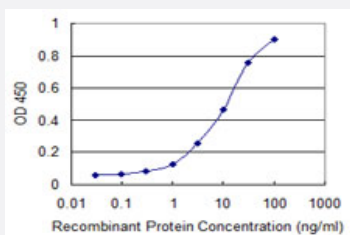
Lane 1: GOLM1 transfected lysate(45.3 KDa).

Lane 2: Non-transfected lysate.



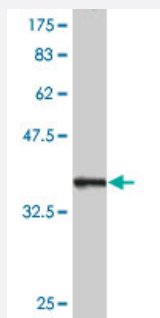
Immunoprecipitation

Immunoprecipitation of GOLM1 transfected lysate using anti-GOLM1 monoclonal antibody and Protein A Magnetic Bead, and immunoblotted with GOLM1 MaxPab rabbit polyclonal antibody.



Sandwich ELISA (Recombinant protein)

Detection limit for recombinant GST tagged GOLM1 is 0.1 ng/ml as a capture antibody.



Western Blot detection against Immunogen (36.74 KDa) .

Specification

Product Description	Mouse monoclonal antibody raised against a partial recombinant GOLM1.
Immunogen	GOLM1 (NP_057632, 302 a.a. ~ 401 a.a) partial recombinant protein with GST tag. MW of the GST tag alone is 26 KDa.
Sequence	VQAALSVSQENPEMEGPERDQLVIPDGQEEEQEAAGEGRNQKLRGEDDYNMDENEAESSTD KQAALAGNDRNIDVFNVEDQKRDTINLLDQREKRNHTL
Host	Mouse
Reactivity	Human
Isotype	IgG1 Kappa
Quality Control Testing	Antibody Reactive Against Recombinant Protein. Western Blot detection against Immunogen (36.74 KDa) .
Storage Buffer	In 1x PBS, pH 7.4
Storage Instruction	Store at -20°C or lower. Aliquot to avoid repeated freezing and thawing.

Applications

- Western Blot (Transfected lysate)

Western Blot analysis of GOLM1 expression in transfected 293T cell line by GOLPH2 monoclonal antibody (M04), clone 3B10.

Lane 1: GOLM1 transfected lysate(45.3 KDa).

Lane 2: Non-transfected lysate.

[Protocol Download](#)

- Western Blot (Recombinant protein)

[Protocol Download](#)

- Immunoprecipitation

Immunoprecipitation of GOLM1 transfected lysate using anti-GOLM1 monoclonal antibody and Protein A Magnetic Bead, and immunoblotted with GOLM1 MaxPab rabbit polyclonal antibody.

[Protocol Download](#)

- Sandwich ELISA (Recombinant protein)

Detection limit for recombinant GST tagged GOLM1 is 0.1 ng/ml as a capture antibody.

[Protocol Download](#)

- ELISA

Gene Info — GOLM1

Entrez GeneID [51280](#)

GeneBank Accession# [NM_016548](#)

Protein Accession# [NP_057632](#)

Gene Name GOLM1

Gene Alias C9orf155, FLJ22634, FLJ23608, GOLPH2, GP73, PSEC0257, bA379P1.3

Gene Description golgi membrane protein 1

Omim ID [606804](#)

Gene Ontology [Hyperlink](#)

Gene Summary The Golgi complex plays a key role in the sorting and modification of proteins exported from the endoplasmic reticulum. The protein encoded by this gene is a type II Golgi transmembrane protein. It processes proteins synthesized in the rough endoplasmic reticulum and assists in the transport of protein cargo through the Golgi apparatus. The expression of this gene has been observed to be upregulated in response to viral infection. Alternatively spliced transcript variants encoding the same protein have been described for this gene. [provided by RefSeq]

Other Designations OTTHUMP00000021587|golgi membrane protein GP73|golgi phosphoprotein 2|golgi protein, 73-kD

Publication Reference

- [Knockdown of Golgi phosphoprotein 73 blocks the trafficking of matrix metalloproteinase-2 in hepatocellular carcinoma cells and inhibits cell invasion.](#)

Liu Y, Zhang X, Zhou S, Shi J, Xu Y, He J, Lin F, Wei A, Zhou L, Chen Z.

Journal of Cellular and Molecular Medicine 2019 Apr; 23(4):2399.

Application: WB, Human, HepG2, Huh7, PLC5, MHCC-97 H cells

Disease

- [Alzheimer disease](#)
- [Cognition](#)
- [Genetic Predisposition to Disease](#)
- [Tobacco Use Disorder](#)