

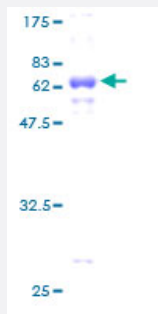
Full-Length

CLEC1A (Human) Recombinant Protein (P01)

Catalog # H00051267-P01

Size 25 ug, 10 ug

Applications



Specification

Product Description

Human CLEC1A full-length ORF (AAH39072, 1 a.a. - 280 a.a.) recombinant protein with GST-tag at N-terminal.

Sequence

MQAKYSSTRDMLDDDDGDTTMSLHSQGSATTRHPEPRRTEHRAPSSTWRPVALTLLTLCLVLLIGL
AALGLLFFQYYQLSNTGQDTISQMEERLGNTSQELQSLQVQNIKLAGSLQHVAEKLCRELYNKAGA
HRCSPRTEQWKWHGDNCYQFYKDSKSWEDCKYFCLSENSTMLKINKQEDLEFAASQSYSEFFY
SYWTGLLRPDSGKAWLWMDGTPFTSELFHIIIDVTSPRSRDCVAILNGMIFSKDCKELKRCVCERR
AGMVKPESLHVPPETLGED

Host

Wheat Germ (in vitro)

Theoretical MW (kDa)

56.54

Interspecies Antigen Sequence

Mouse (69); Rat (71)

Preparation Method

[in vitro wheat germ expression system](#)

Purification

Glutathione Sepharose 4 Fast Flow

Quality Control Testing

12.5% SDS-PAGE Stained with Coomassie Blue.

Storage Buffer

50 mM Tris-HCl, 10 mM reduced Glutathione, pH=8.0 in the elution buffer.

Storage Instruction

Store at -80°C. Aliquot to avoid repeated freezing and thawing.

Note

Best use within three months from the date of receipt of this protein.

Applications

- Enzyme-linked Immunoabsorbent Assay
- Western Blot (Recombinant protein)
- Antibody Production
- Protein Array

Gene Info — CLEC1A

Entrez GeneID[51267](#)**GeneBank Accession#**[BC039072](#)**Protein Accession#**[AAH39072](#)**Gene Name**

CLEC1A

Gene Alias

CLEC1, MGC34328

Gene Description

C-type lectin domain family 1, member A

Omim ID[606782](#)**Gene Ontology**[Hyperlink](#)**Gene Summary**

This gene encodes a member of the C-type lectin/C-type lectin-like domain (CTL/CTLD) superfamily. Members of this family share a common protein fold and have diverse functions, such as cell adhesion, cell-cell signalling, glycoprotein turnover, and roles in inflammation and immune response. The encoded protein may play a role in regulating dendritic cell function. Alternative splice variants have been described but their biological nature has not been determined. This gene is closely linked to other CTL/CTLD superfamily members on chromosome 12p13 in the natural killer gene complex region. [provided by RefSeq]

Other Designations

C-type lectin-like receptor-1