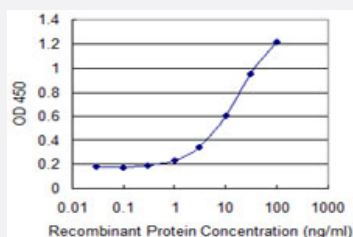


# CLEC1A monoclonal antibody (M01), clone 2F7

Catalog # H00051267-M01

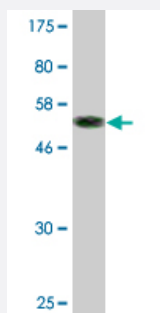
Size 100 ug

## Applications



### Sandwich ELISA (Recombinant protein)

Detection limit for recombinant GST tagged CLEC1A is 0.3 ng/ml as a capture antibody.



Western Blot detection against Immunogen (56.54 KDa) .

## Specification

### Product Description

Mouse monoclonal antibody raised against a full-length recombinant CLEC1A.

### Immunogen

CLEC1A (AAH39072, 1 a.a. ~ 280 a.a) full-length recombinant protein with GST tag. MW of the GST tag alone is 26 KDa.

### Sequence

MQAKYSSTRDMLDDDDGDTTMSLHSQGSATTRHPEPRRTEHRAPSSTWRPVALTLLTLCLVLLIGL  
AALGLLFFQYYQLSNTGQDTISQMEERLGNTSQELQSLQVQNIKLAGSLQHVAEKLCRELYNKAGA  
HRCSPRTEQWKWHGDNCYQFYKDSKSWEDCKYFCLSENSTMLKINKQEDLEFAASQSYSEFFY  
SYWTGLLRPDSGKAWLWMDGTPFTSELFHIIIDVTSPRSRDCVAILNGMIFSKDCKELKRCVCERR  
AGMVKPESLHVPPETLGEGD

### Host

Mouse

Reactivity	Human
Interspecies Antigen Sequence	Mouse (69); Rat (71)
Isotype	IgG2a Kappa
Quality Control Testing	Antibody Reactive Against Recombinant Protein. Western Blot detection against Immunogen (56.54 KDa) .
Storage Buffer	In 1x PBS, pH 7.4
Storage Instruction	Store at -20°C or lower. Aliquot to avoid repeated freezing and thawing.

## Applications

- Western Blot (Recombinant protein)

[Protocol Download](#)

- Sandwich ELISA (Recombinant protein)

Detection limit for recombinant GST tagged CLEC1A is 0.3 ng/ml as a capture antibody.

[Protocol Download](#)

- ELISA

## Gene Info — CLEC1A

Entrez GeneID	<a href="#">51267</a>
GeneBank Accession#	<a href="#">BC039072</a>
Protein Accession#	<a href="#">AAH39072</a>
Gene Name	CLEC1A
Gene Alias	CLEC1, MGC34328
Gene Description	C-type lectin domain family 1, member A
Omim ID	<a href="#">606782</a>
Gene Ontology	<a href="#">Hyperlink</a>

**Gene Summary**

This gene encodes a member of the C-type lectin/C-type lectin-like domain (CTL/CTLD) superfamily. Members of this family share a common protein fold and have diverse functions, such as cell adhesion, cell-cell signalling, glycoprotein turnover, and roles in inflammation and immune response. The encoded protein may play a role in regulating dendritic cell function. Alternative splice variants have been described but their biological nature has not been determined. This gene is closely linked to other CTL/CTLD superfamily members on chromosome 12p13 in the natural killer gene complex region. [provided by RefSeq]

**Other Designations**

C-type lectin-like receptor-1