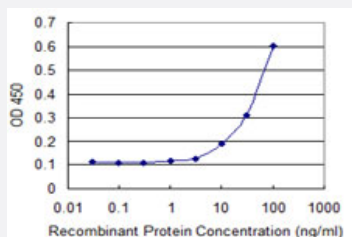


CDKL3 monoclonal antibody (M03), clone 4F1

Catalog # H00051265-M03

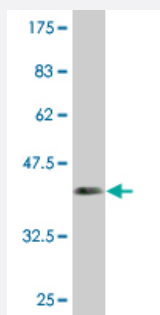
Size 100 ug

Applications



Sandwich ELISA (Recombinant protein)

Detection limit for recombinant GST tagged CDKL3 is 3 ng/ml as a capture antibody.



Western Blot detection against Immunogen (36.63 KDa) .

Specification

Product Description

Mouse monoclonal antibody raised against a partial recombinant CDKL3.

Immunogen

CDKL3 (AAH41799.1, 322 a.a. ~ 420 a.a) partial recombinant protein with GST tag. MW of the GST tag alone is 26 KDa.

Sequence

NELRKDERKTVYTNTLLSSSVLGKEIEKEKKPKKEIKVRVIKVKGGRGDISEPKKKEYEGGLGQQDA
NENVHPMSPDTKLVTIEPPNPINPSTNCNGLKE

Host

Mouse

Reactivity

Human

Interspecies Antigen Sequence	Mouse (80); Rat (81)
Isotype	IgG2a Kappa
Quality Control Testing	Antibody Reactive Against Recombinant Protein. Western Blot detection against Immunogen (36.63 KDa) .
Storage Buffer	In 1x PBS, pH 7.4
Storage Instruction	Store at -20°C or lower. Aliquot to avoid repeated freezing and thawing.

Applications

- Western Blot (Recombinant protein)

[Protocol Download](#)

- Sandwich ELISA (Recombinant protein)

Detection limit for recombinant GST tagged CDKL3 is 3 ng/ml as a capture antibody.

[Protocol Download](#)

- ELISA

Gene Info — CDKL3

Entrez GeneID	51265
GeneBank Accession#	BC041799
Protein Accession#	AAH41799.1
Gene Name	CDKL3
Gene Alias	NKIAMRE
Gene Description	cyclin-dependent kinase-like 3
Omim ID	608459
Gene Ontology	Hyperlink

Gene Summary

The protein encoded by this gene is a member of cyclin-dependent protein kinase (CDK) family. CDK family members are highly similar to the gene products of *Saccharomyces cerevisiae* cdc28, and *Schizosaccharomyces pombe* cdc2, and are known to be important regulators of cell cycle progression. This gene was identified as a gene absent in leukemic patients with chromosome 5 q deletion. This loss may be an important determinant of dysmyelopoiesis. Alternative splicing results in multiple transcript variants encoding different isoforms. [provided by RefSeq]

Other Designations

serine-threonine protein kinase NKIAMRE

Disease

- [Tobacco Use Disorder](#)