

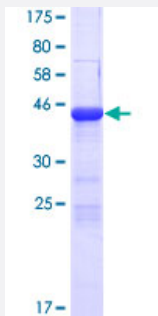
Full-Length

# COPZ2 (Human) Recombinant Protein (P01)

Catalog # H00051226-P01

Size 25 ug, 10 ug

## Applications



## Specification

Product Description	Human COPZ2 full-length ORF ( NP_057513.1, 1 a.a. - 210 a.a.) recombinant protein with GST-tag at N-terminal.
Sequence	MQRPEAWPRPHPGEGAAAAQAGGPAPPARAGEPSGLRLQEPSLYTIKAVFILDNDGRRLLAKYY DDTFPSMKEQMVFENKTSRTESEIAFFGGMTVYKNSIDFLYVVGSSYENELMLMSVLTCL FESLNHMLRKNVEKRWLLENMDGAFLVLDEVDGGVILESDPQQVIQKVNFRADDGGLTEQSV QVLQSAKEQIKWSLLK
Host	Wheat Germ (in vitro)
Theoretical MW (kDa)	49.9
Interspecies Antigen Sequence	Mouse (89); Rat (90)
Preparation Method	<a href="#">in vitro wheat germ expression system</a>
Purification	Glutathione Sepharose 4 Fast Flow
Quality Control Testing	12.5% SDS-PAGE Stained with Coomassie Blue.
Storage Buffer	50 mM Tris-HCl, 10 mM reduced Glutathione, pH=8.0 in the elution buffer.
Storage Instruction	Store at -80°C. Aliquot to avoid repeated freezing and thawing.

## Note

Best use within three months from the date of receipt of this protein.

## Applications

- Enzyme-linked Immunoabsorbent Assay
- Western Blot (Recombinant protein)
- Antibody Production
- Protein Array

## Gene Info — COPZ2

Entrez GeneID [51226](#)

GeneBank Accession# [NM\\_016429.1](#)

Protein Accession# [NP\\_057513.1](#)

Gene Name COPZ2

Gene Alias MGC23008

Gene Description coatomer protein complex, subunit zeta 2

Gene Ontology [Hyperlink](#)

**Gene Summary** This gene encodes a subunit of the coatomer protein complex, a seven-subunit complex that functions in the formation of COPI-type, non-clathrin-coated vesicles. COPI vesicles function in the retrograde Golgi-to-ER transport of dilysine-tagged proteins. This gene is similar to a related family member, and the two encoded proteins form distinct isoforms of the coatomer protein complex. [provided by RefSeq]

**Other Designations** nonclathrin coat protein zeta-COP|zeta-2 coat protein|zeta2-COP