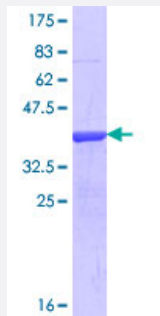


ABI3 (Human) Recombinant Protein (Q01)

Catalog # H00051225-Q01

Size 25 ug, 10 ug

Applications



Specification

Product Description	Human ABI3 partial ORF (NP_057512.1, 75 a.a. - 182 a.a.) recombinant protein with GST-tag at N-terminal.
Sequence	MLDLQGAALRQVEARVSTLGQMVNMHMEKVARREIGTLATVQRLPPGQKVIAPENLPPLTPYCRR PLNFGCLDDIGHGKDLSTQLSRTGTLRKSIAKAPATPASATL
Host	Wheat Germ (in vitro)
Theoretical MW (kDa)	37.62
Interspecies Antigen Sequence	Mouse (84); Rat (84)
Preparation Method	in vitro wheat germ expression system
Purification	Glutathione Sepharose 4 Fast Flow
Quality Control Testing	12.5% SDS-PAGE Stained with Coomassie Blue.
Storage Buffer	50 mM Tris-HCl, 10 mM reduced Glutathione, pH=8.0 in the elution buffer.
Storage Instruction	Store at -80°C. Aliquot to avoid repeated freezing and thawing.
Note	Best use within three months from the date of receipt of this protein.

Applications

- Enzyme-linked Immunoabsorbent Assay
- Western Blot (Recombinant protein)
- Antibody Production
- Protein Array

Gene Info — ABI3

Entrez GeneID [51225](#)

GeneBank Accession# [NM_016428](#)

Protein Accession# [NP_057512.1](#)

Gene Name ABI3

Gene Alias NESH, SSH3BP3

Gene Description ABI family, member 3

Omim ID [606363](#)

Gene Ontology [Hyperlink](#)

Gene Summary This gene encodes a member of an adaptor protein family. Members of this family encode proteins containing a homeobox homology domain, proline rich region and Src-homology 3 (SH3) domain, and are components of the Abi/WAVE complex which regulates Rac-dependent actin polymerization. The encoded protein inhibits ectopic metastasis of tumor cells as well as cell migration. This may be accomplished through interaction with p21-activated kinase. [provided by RefSeq]

Other Designations ABI gene family, member 3|NESH protein|new molecule including SH3