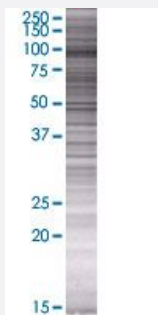


# TCEB3B 293T Cell Transient Overexpression Lysate(Denatured)

Catalog # H00051224-T01

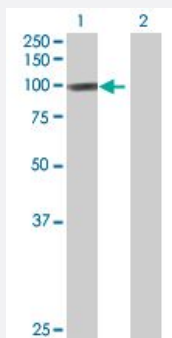
Size 100 uL

## Applications



### SDS-PAGE Gel

TCEB3B transfected lysate.



### Western Blot

Lane 1: TCEB3B transfected lysate ( 82.94 KDa)

Lane 2: Non-transfected lysate.

## Specification

**Transfected Cell Line** 293T

**Plasmid** pCMV-TCEB3B full-length

**Host** Human

**Theoretical MW (kDa)** 82.94

**Quality Control Testing** Transient overexpression cell lysate was tested with Anti-TCEB3B antibody ([H00051224-B01](#)) by Western Blots.  
SDS-PAGE Gel  
TCEB3B transfected lysate.  
Western Blot  
Lane 1: TCEB3B transfected lysate ( 82.94 KDa)  
Lane 2: Non-transfected lysate.

**Storage Buffer**

1X Sample Buffer (50 mM Tris-HCl, 2% SDS, 10% glycerol, 300 mM 2-mercaptoethanol, 0.01% Bromophenol blue)

**Storage Instruction**

Store at -80°C. Aliquot to avoid repeated freezing and thawing.

## Applications

- Western Blot

## Gene Info — TCEB3B

**Entrez GeneID**[51224](#)**GeneBank Accession#**[BC103911.1](#)**Protein Accession#**[AAI03912.1](#)**Gene Name**

TCEB3B

**Gene Alias**

ELOA2, HsT832, MGC119351, TCEB3L

**Gene Description**

transcription elongation factor B polypeptide 3B (elongin A2)

**Omim ID**[609522](#)**Gene Ontology**[Hyperlink](#)**Gene Summary**

This gene encodes the transcriptionally active subunit of the SIII (or elongin) transcription elongation factor complex, which also includes two regulatory subunits, elongins B and C. This complex acts to increase the rate of RNA chain elongation by RNA polymerase II by suppressing transient pausing of the polymerase at many sites along the DNA template. Whereas a related protein with similar function, elongin A, is ubiquitously expressed, the encoded protein is specifically expressed in the testis, suggesting it may have a role in spermatogenesis. [provided by RefSeq]

**Other Designations**

OTTHUMP00000163486|RNA polymerase II transcription factor SIII subunit A2|elongin A2|transcription elongation factor (SIII) elongin A2 elongin A2