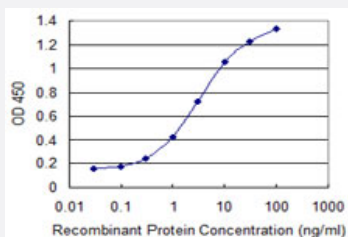


## CPA4 monoclonal antibody (M07), clone 1F4

Catalog # H00051200-M07

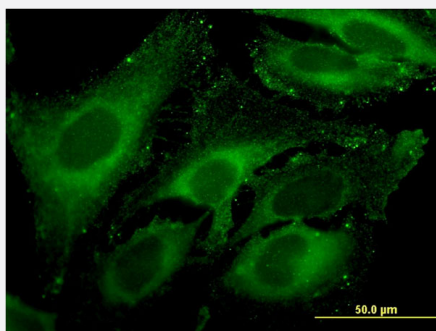
Size 100 ug

### Applications



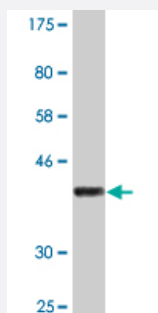
#### Sandwich ELISA (Recombinant protein)

Detection limit for recombinant GST tagged CPA4 is 0.1 ng/ml as a capture antibody.



#### Immunofluorescence

Immunofluorescence of monoclonal antibody to CPA4 on HeLa cell . [antibody concentration 10 ug/ml]



Western Blot detection against Immunogen (36.96 KDa) .

### Specification

#### Product Description

Mouse monoclonal antibody raised against a partial recombinant CPA4.

<b>Immunogen</b>	CPA4 (NP_057436, 260 a.a. ~ 361 a.a) partial recombinant protein with GST tag. MW of the GST tag alone is 26 KDa.
<b>Sequence</b>	NASFAGKGASDNPCSEVYHGPHANSEVEVKSVVDFIQKHGKGFIDLHSYSQLLMYPYGYSVK KAPDAEELDKVARLAALKALASVSGTEYQVGPTCTTVYP
<b>Host</b>	Mouse
<b>Reactivity</b>	Human
<b>Interspecies Antigen Sequence</b>	Mouse (83); Rat (84)
<b>Isotype</b>	IgG1 Kappa
<b>Quality Control Testing</b>	Antibody Reactive Against Recombinant Protein. Western Blot detection against Immunogen (36.96 KDa) .
<b>Storage Buffer</b>	In 1x PBS, pH 7.4
<b>Storage Instruction</b>	Store at -20°C or lower. Aliquot to avoid repeated freezing and thawing.

## Applications

- Western Blot (Recombinant protein)

[Protocol Download](#)

- Sandwich ELISA (Recombinant protein)

Detection limit for recombinant GST tagged CPA4 is 0.1 ng/ml as a capture antibody.

[Protocol Download](#)

- ELISA

- Immunofluorescence

Immunofluorescence of monoclonal antibody to CPA4 on HeLa cell . [antibody concentration 10 ug/ml]

## Gene Info — CPA4

<b>Entrez GeneID</b>	<a href="#">51200</a>
<b>GeneBank Accession#</b>	<a href="#">NM_016352</a>

Protein Accession#	<a href="#">NP_057436</a>
Gene Name	CPA4
Gene Alias	CPA3
Gene Description	carboxypeptidase A4
Omim ID	<a href="#">607635</a>
Gene Ontology	<a href="#">Hyperlink</a>
Gene Summary	<p>This gene is a member of the carboxypeptidase A/B subfamily, and it is located in a cluster with three other family members on chromosome 7. Carboxypeptidases are zinc-containing exopeptidases that catalyze the release of carboxy-terminal amino acids, and are synthesized as zymogens that are activated by proteolytic cleavage. This gene could be involved in the histone hyperacetylation pathway. It is imprinted and may be a strong candidate gene for prostate cancer aggressiveness. [provided by RefSeq]</p>
Other Designations	carboxypeptidase A3

## Disease

- [Colorectal Neoplasms](#)
- [Genetic Predisposition to Disease](#)
- [Prostate cancer](#)
- [Prostatic Neoplasms](#)