

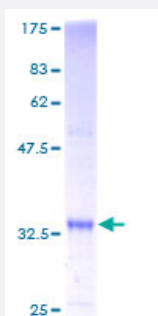
Full-Length

SS18L2 (Human) Recombinant Protein (P01)

Catalog # H00051188-P01

Size 25 ug, 10 ug

Applications



Specification

Product Description	Human SS18L2 full-length ORF (AAH17804, 1 a.a. - 77 a.a.) recombinant protein with GST-tag at N-terminal.
Sequence	MSVAFVPDWLRGKAEVNQETIQRLLLEENDQLIRCIVEYLNKGRGNECVQYQHVLHRNLIYLATIADA SPTSTSKAME
Host	Wheat Germ (in vitro)
Theoretical MW (kDa)	34.21
Interspecies Antigen Sequence	Mouse (85); Rat (85)
Preparation Method	in vitro wheat germ expression system
Purification	Glutathione Sepharose 4 Fast Flow
Quality Control Testing	12.5% SDS-PAGE Stained with Coomassie Blue.
Storage Buffer	50 mM Tris-HCl, 10 mM reduced Glutathione, pH=8.0 in the elution buffer.
Storage Instruction	Store at -80°C. Aliquot to avoid repeated freezing and thawing.
Note	Best use within three months from the date of receipt of this protein.

Applications

- Enzyme-linked Immunoabsorbent Assay
- Western Blot (Recombinant protein)
- Antibody Production
- Protein Array

Gene Info — SS18L2

Entrez GeneID [51188](#)

GeneBank Accession# [BC017804](#)

Protein Accession# [AAH17804](#)

Gene Name SS18L2

Gene Alias KIAA-iso

Gene Description synovial sarcoma translocation gene on chromosome 18-like 2

Omim ID [606473](#)

Gene Ontology [Hyperlink](#)

Gene Summary Synovial sarcomas occur most frequently in the extremities around large joints. More than 90% of cases have a recurrent and specific chromosomal translocation, t(X;18)(p11.2;q11.2), in which the 5-prime end of the SS18 gene (MIM 600192) is fused in-frame to the 3-prime end of the SSX1 (MIM 312820), SSX2 (MIM 300192), or SSX4 (MIM 300326) gene. The SS18L2 gene is homologous to SS18.[supplied by OMIM]

Other Designations SYT homolog 2