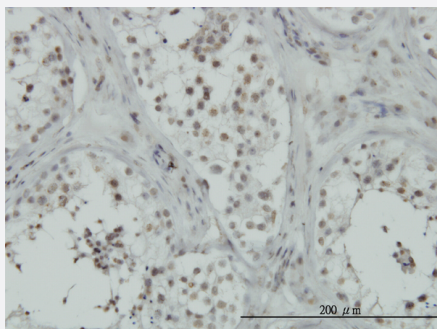


C15orf15 monoclonal antibody (M01), clone 2A10-1E5

Catalog # H00051187-M01

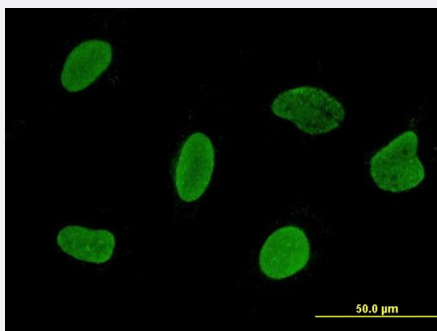
Size 100 ug

Applications



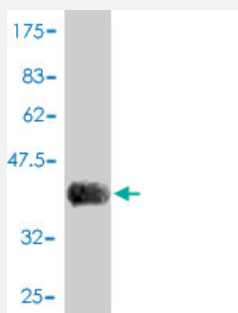
Immunohistochemistry (Formalin/PFA-fixed paraffin-embedded sections)

Immunoperoxidase of monoclonal antibody to C15orf15 on formalin-fixed paraffin-embedded human testis. [antibody concentration 1 ug/ml]



Immunofluorescence

Immunofluorescence of monoclonal antibody to C15orf15 on HeLa cell . [antibody concentration 10 ug/ml]



Western Blot detection against Immunogen (42.24 KDa) .

Specification

Product Description

Mouse monoclonal antibody raised against a full length recombinant C15orf15.

Immunogen	C15orf15 (AAH05344, 1 a.a. ~ 150 a.a) full-length recombinant protein with GST tag. MW of the GST tag alone is 26 KDa.
Sequence	MRIEKCYFCSGPIYPGHGMMFVRNDCKVFRFCKSKCHKNFKKKRNPRKVRWTKAFRKAAGKELT VDNSFEFEKRRNEPIKYQRELWNKTIDAMKRVEEIKQKRQAKFIMNRLKKNKELQKVQDIKEVKQN IHLIRAPLAGKGKQLEEKMV
Host	Mouse
Reactivity	Human
Interspecies Antigen Sequence	Mouse (98); Rat (98)
Isotype	IgG1 kappa
Quality Control Testing	Antibody Reactive Against Recombinant Protein. Western Blot detection against Immunogen (42.24 KDa) .
Storage Buffer	In 1x PBS, pH 7.4
Storage Instruction	Store at -20°C or lower. Aliquot to avoid repeated freezing and thawing.

Applications

- Western Blot (Recombinant protein)

[Protocol Download](#)

- Immunohistochemistry (Formalin/PFA-fixed paraffin-embedded sections)

Immunoperoxidase of monoclonal antibody to C15orf15 on formalin-fixed paraffin-embedded human testis. [antibody concentration 1 ug/ml]

[Protocol Download](#)

- ELISA

- Immunofluorescence

Immunofluorescence of monoclonal antibody to C15orf15 on HeLa cell . [antibody concentration 10 ug/ml]

Gene Info — C15orf15

Entrez GeneID

[51187](#)

GeneBank Accession#	BC005344
Protein Accession#	AAH05344
Gene Name	C15orf15
Gene Alias	HRP-L30-iso, L30, RLP24, RPL24, RPL24L, TVAS3
Gene Description	chromosome 15 open reading frame 15
Gene Ontology	Hyperlink
Gene Summary	This gene encodes a protein sharing a low level of sequence similarity with human ribosomal protein L24. Although this gene has been referred to as RPL24, L30, and 60S ribosomal protein L30 isolog in the sequence databases, it is distinct from the human genes officially named RPL24 (which itself has been referred to as ribosomal protein L30) and RPL30. The function of this gene is currently unknown. This gene utilizes alternative polyadenylation signals. [provided by RefSeq]
Other Designations	60S ribosomal protein L30 isolog homolog of yeast ribosomal like protein 24 my024 protein ribosomal protein L24-like

Pathway

- [Ribosome](#)