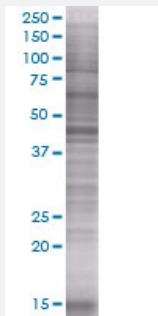


# TUBE1 293T Cell Transient Overexpression Lysate(Denatured)

Catalog # H00051175-T01

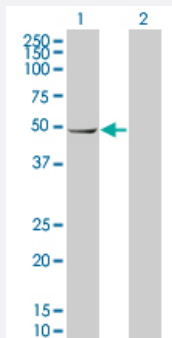
Size 100 uL

## Applications



### SDS-PAGE Gel

TUBE1 transfected lysate



### Western Blot

Lane 1: TUBE1 transfected lysate ( 52.9 KDa).

Lane 2: Non-transfected lysate.

## Specification

Transfected Cell Line	293T
Plasmid	pCMV-TUBE1 full-length
Host	Human
Theoretical MW (kDa)	52.9
Interspecies Antigen Sequence	Mouse (91); Rat (90)

**Quality Control Testing**

Transient overexpression cell lysate was tested with Anti-TUBE1 antibody ([H00051175-B01](#)) by Western Blots.  
SDS-PAGE Gel  
TUBE1 transfected lysate  
Western Blot  
Lane 1: TUBE1 transfected lysate ( 52.9 KDa).  
Lane 2: Non-transfected lysate.

**Storage Buffer**

1X Sample Buffer (50 mM Tris-HCl, 2% SDS, 10% glycerol, 300 mM 2-mercaptoethanol, 0.01% Bromophenol blue)

**Storage Instruction**

Store at -80°C. Aliquot to avoid repeated freezing and thawing.

## Applications

- Western Blot

## Gene Info — TUBE1

Entrez GeneID [51175](#)

GeneBank Accession# [NM\\_016262](#)

Protein Accession# [NP\\_057346](#)

Gene Name TUBE1

Gene Alias FLJ22589, TUBE, dJ142L7.2

Gene Description tubulin, epsilon 1

Omim ID [607345](#)

Gene Ontology [Hyperlink](#)

**Gene Summary**

This gene encodes a member of the tubulin superfamily. This protein localizes to the centriolar sub-distal appendages that are associated with the older of the two centrioles after centrosome duplication. This protein plays a central role in organization of the microtubules during centriole duplication. A pseudogene of this gene is found on chromosome 5

**Other Designations**

OTTHUMP00000017033|OTTHUMP00000040425|epsilon-tubulin