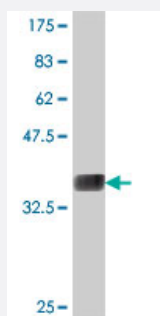


NAGPA polyclonal antibody (A01)

Catalog # H00051172-A01

Size 50 uL

Applications



Western Blot detection against Immunogen (37.11 kDa) .

Specification

| | |
|--------------------------------------|--|
| Product Description | Mouse polyclonal antibody raised against a partial recombinant NAGPA. |
| Immunogen | NAGPA (NP_057340, 309 a.a. ~ 408 a.a) partial recombinant protein with GST tag. |
| Sequence | DNMWRCPRQVSTVVCVHEPRCQPPDCHGHGTCVDGHCQCTGHFWRGPGCDELDCGPSNCS QHGLCTETGCRCDAGWTGSNCSEECPLGWHGPGCQRPCCK |
| Host | Mouse |
| Reactivity | Human |
| Interspecies Antigen Sequence | Mouse (91); Rat (87) |
| Quality Control Testing | Antibody Reactive Against Recombinant Protein. Western Blot detection against Immunogen (37.11 kDa) . |
| Storage Buffer | 50 % glycerol |
| Storage Instruction | Store at -20°C or lower. Aliquot to avoid repeated freezing and thawing. |

Applications

- Western Blot (Recombinant protein)

[Protocol Download](#)

- ELISA

Gene Info — NAGPA

Entrez GeneID [51172](#)

GeneBank Accession# [NM_016256](#)

Protein Accession# [NP_057340](#)

Gene Name NAGPA

Gene Alias APAA, UCE

Gene Description N-acetylglucosamine-1-phosphodiester alpha-N-acetylglucosaminidase

Omim ID [607985](#)

Gene Ontology [Hyperlink](#)

Gene Summary

Hydrolases are transported to lysosomes after binding to mannose 6-phosphate receptors in the trans-Golgi network. This gene encodes the enzyme that catalyzes the second step in the formation of the mannose 6-phosphate recognition marker on lysosomal hydrolases. Commonly known as 'uncovering enzyme' or UCE, this enzyme removes N-acetyl-D-glucosamine (GlcNAc) residues from GlcNAc-alpha-P-mannose moieties and thereby produces the recognition marker. This reaction most likely occurs in the trans-Golgi network. This enzyme functions as a homotetramer of two disulfide-linked homodimers. In addition to having an N-terminal signal peptide, the protein's C-terminus contains multiple signals for trafficking it between lysosomes, the plasma membrane, and trans-Golgi network. [provided by RefSeq]

Other Designations

alpha-N-acetylglucosaminyl phosphodiesterase|lysosomal alpha-N-acetylglucosaminidase|mannose 6-phosphate-uncovering enzyme|phosphodiester alpha-GlcNAcase

Pathway

- [Lysosome](#)