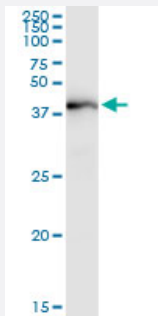


AADAT (Human) IP-WB Antibody Pair

Catalog # H00051166-PW1

Size 1 Set

Applications



Immunoprecipitation of AADAT transfected lysate using rabbit polyclonal anti-AADAT and Protein A Magnetic Bead ([U0007](#)), and immunoblotted with mouse purified polyclonal anti-AADAT.

Specification

Product Description	This IP-WB antibody pair set comes with one antibody for immunoprecipitation and another to detect the precipitated protein in western blot.
Reactivity	Human
Interspecies Antigen Sequence	Mouse (72); Rat (71)
Quality Control Testing	Immunoprecipitation-Western Blot (IP-WB) Immunoprecipitation of AADAT transfected lysate using rabbit polyclonal anti-AADAT and Protein A Magnetic Bead (U0007), and immunoblotted with mouse purified polyclonal anti-AADAT.
Supplied Product	Antibody pair set content: 1. Antibody pair for IP: rabbit polyclonal anti-AADAT (300 ul) 2. Antibody pair for WB: mouse purified polyclonal anti-AADAT (50 ug)
Storage Instruction	Store reagents of the antibody pair set at -20°C or lower. Please aliquot to avoid repeated freeze thaw cycle. Reagents should be returned to -20°C storage immediately after use.

Applications

- Immunoprecipitation-Western Blot

[Protocol Download](#)

Gene Info — AADAT

Entrez GeneID [51166](#)

Gene Name AADAT

Gene Alias KAT2, KATII

Gene Description aminoadipate aminotransferase

Gene Ontology [Hyperlink](#)

Gene Summary This gene encodes a protein that is highly similar to mouse and rat kynurenine aminotransferase II . The rat protein is a homodimer with two transaminase activities. One activity is the transamination of alpha-aminoadipic acid, a final step in the saccaropine pathway which is the major pathway for L-lysine catabolism. The other activity involves the transamination of kynurenine to produce kynurenine acid, the precursor of kynurenic acid which has neuroprotective properties. Two alternative transcripts encoding the same isoform have been identified, however, additional alternative transcripts and isoforms may exist. [provided by RefSeq]

Other Designations L kynurenine/alpha aminoadipate aminotransferase|L-kynurenine/alpha-aminoadipate aminotransferase|alpha-aminoadipate aminotransferase|kynurenine aminotransferase II

Pathway

- [Lysine biosynthesis](#)
- [Lysine degradation](#)
- [Metabolic pathways](#)
- [Tryptophan metabolism](#)