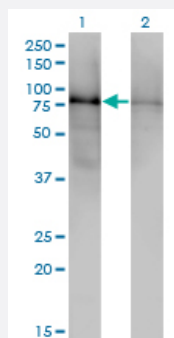


DBR1 monoclonal antibody (M01), clone 3A7

Catalog # H00051163-M01

Size 100 ug

Applications

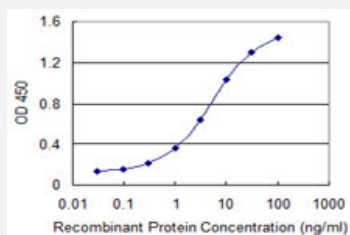


Western Blot (Transfected lysate)

Western Blot analysis of DBR1 expression in transfected 293T cell line by DBR1 monoclonal antibody (M01), clone 3A7.

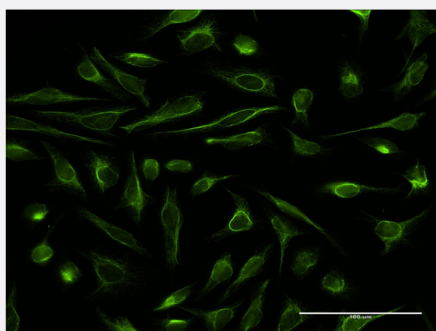
Lane 1: DBR1 transfected lysate (61.6 kDa).

Lane 2: Non-transfected lysate.



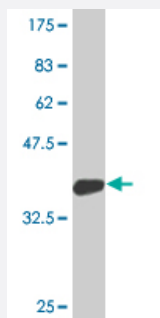
Sandwich ELISA (Recombinant protein)

Detection limit for recombinant GST tagged DBR1 is 0.03 ng/ml as a capture antibody.



Immunofluorescence

Immunofluorescence of monoclonal antibody to DBR1 on HeLa cell . [antibody concentration 10 ug/ml]



Western Blot detection against Immunogen (36.08 KDa) .

Specification

Product Description	Mouse monoclonal antibody raised against a partial recombinant DBR1.
Immunogen	DBR1 (NP_057300.2, 445 a.a. ~ 538 a.a) partial recombinant protein with GST tag. MW of the GST tag alone is 26 KDa.
Sequence	SGMNTPSVEPSDQASEFSASFSDVRLPGSMVSSDDTV DSTIDREGKPGGTVESGNGEDLTKV PLKRLSDEHEPEQRKKIKRRNQAIYAAVDD
Host	Mouse
Reactivity	Human
Interspecies Antigen Sequence	Mouse (85); Rat (85)
Isotype	IgG2a Kappa
Quality Control Testing	Antibody Reactive Against Recombinant Protein. Western Blot detection against Immunogen (36.08 KDa) .
Storage Buffer	In 1x PBS, pH 7.4
Storage Instruction	Store at -20°C or lower. Aliquot to avoid repeated freezing and thawing.

Applications

● Western Blot (Transfected lysate)

Western Blot analysis of DBR1 expression in transfected 293T cell line by DBR1 monoclonal antibody (M01), clone 3A7.

Lane 1: DBR1 transfected lysate(61.6 KDa).

Lane 2: Non-transfected lysate.

[Protocol Download](#)

- Western Blot (Recombinant protein)

[Protocol Download](#)

- Sandwich ELISA (Recombinant protein)

Detection limit for recombinant GST tagged DBR1 is 0.03 ng/ml as a capture antibody.

[Protocol Download](#)

- ELISA

- Immunofluorescence

Immunofluorescence of monoclonal antibody to DBR1 on HeLa cell . [antibody concentration 10 ug/ml]

Gene Info — DBR1

Entrez GeneID	51163
GeneBank Accession#	NM_016216
Protein Accession#	NP_057300.2
Gene Name	DBR1
Gene Alias	-
Gene Description	debranching enzyme homolog 1 (S. cerevisiae)
Omim ID	607024
Gene Ontology	Hyperlink
Gene Summary	The RNA lariat debranching enzyme, or DBR1, specifically hydrolyzes 2-prime-to-5-prime branched phosphodiester bonds at the branch point of excised lariat intron RNA and converts them into linear molecules.[supplied by OMIM]
Other Designations	RNA lariat debranching enzyme debranching enzyme homolog 1