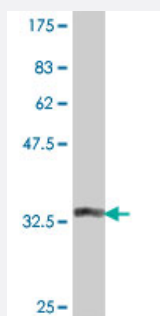


RPL26L1 polyclonal antibody (A01)

Catalog # H00051121-A01

Size 50 uL

Applications



Western Blot detection against Immunogen (37.11 kDa) .

Specification

Product Description	Mouse polyclonal antibody raised against a partial recombinant RPL26L1.
Immunogen	RPL26L1 (NP_057177, 1 a.a. ~ 100 a.a) partial recombinant protein with GST tag.
Sequence	MKFNPFVTSDRSKNRKRHFNAPSHVRRKIMSSPLSKELRQKYNVRSMPIRKDDEVQVVRGHYKG QQIGKVQVYRKKYVIMERVQREKANGTTVHVGIIH
Host	Mouse
Reactivity	Human
Interspecies Antigen Sequence	Rat (91)
Quality Control Testing	Antibody Reactive Against Recombinant Protein. Western Blot detection against Immunogen (37.11 kDa) .
Storage Buffer	50 % glycerol
Storage Instruction	Store at -20°C or lower. Aliquot to avoid repeated freezing and thawing.

Applications

- Western Blot (Recombinant protein)

[Protocol Download](#)

- ELISA

Gene Info — RPL26L1

Entrez GeneID [51121](#)

GeneBank Accession# [NM_016093](#)

Protein Accession# [NP_057177](#)

Gene Name RPL26L1

Gene Alias FLJ46904, RPL26P1

Gene Description ribosomal protein L26-like 1

Gene Ontology [Hyperlink](#)

Gene Summary This gene encodes a protein that shares high sequence similarity with ribosomal protein L26. It is not currently known whether the encoded protein is a functional ribosomal protein or whether it has evolved a function that is independent of the ribosome. Transcript variants utilizing alternative poly A signals exist. [provided by RefSeq]

Other Designations ribosomal protein L26 homolog|ribosomal protein L26 pseudogene 1

Pathway

- [Ribosome](#)