

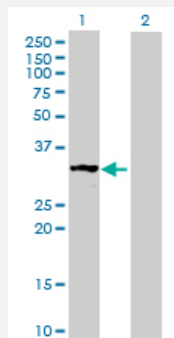
MaxPab®

MRPS2 purified MaxPab mouse polyclonal antibody (B02P)

Catalog # H00051116-B02P

Size 50 ug

Applications



Western Blot (Transfected lysate)

Western Blot analysis of MRPS2 expression in transfected 293T cell line ([H00051116-T02](#)) by MRPS2 MaxPab polyclonal antibody.

Lane 1: MRPS2 transfected lysate(32.56 KDa).

Lane 2: Non-transfected lysate.

Specification

Product Description

Mouse polyclonal antibody raised against a full-length human MRPS2 protein.

Immunogen

MRPS2 (NP_057118.1, 1 a.a. ~ 296 a.a) full-length human protein.

Sequence

MATSSAALPRILGAGARAPSRWLGLGKATPRPARPSRRTLGSATALMIRESEDSTDFNDKILNEP
LKHSDDFFNVKELFSVRSLFDARVHLGHKAGCRHRFMEPYIFGSRLDHDHIDLEQTATHLQLALNFT
AHMAYRKGILFISNRQFSYLIENMARDCEYAHTRYFRGGMLTNARLLFGPTVRLPDLIIFLHTLNNI
FEPHVAVRDAAKMNIPTVGVDTCNPNCLITYVPGNDDSPHAVHLYCRLFQTAITRAKEKRQQVE
ALYRLQGQKEPGDQGPAPPPGADMSHSL

Host

Mouse

Reactivity

Human

Interspecies Antigen Sequence

Mouse (71); Rat (70)

Quality Control Testing

Antibody reactive against mammalian transfected lysate.

Storage Buffer

In 1x PBS, pH 7.4

Storage Instruction

Store at -20°C or lower. Aliquot to avoid repeated freezing and thawing.

Applications

- Western Blot (Transfected lysate)

Western Blot analysis of MRPS2 expression in transfected 293T cell line ([H00051116-T02](#)) by MRPS2 MaxPab polyclonal antibody.

Lane 1: MRPS2 transfected lysate(32.56 KDa).

Lane 2: Non-transfected lysate.

[Protocol Download](#)

Gene Info — MRPS2

Entrez GeneID [51116](#)

GeneBank Accession# [NM_016034.2](#)

Protein Accession# [NP_057118.1](#)

Gene Name MRPS2

Gene Alias CGI-91, MRP-S2, S2mt

Gene Description mitochondrial ribosomal protein S2

Gene Ontology [Hyperlink](#)

Gene Summary

Mammalian mitochondrial ribosomal proteins are encoded by nuclear genes and help in protein synthesis within the mitochondrion. Mitochondrial ribosomes (mitoribosomes) consist of a small 28 S subunit and a large 39S subunit. They have an estimated 75% protein to rRNA composition compared to prokaryotic ribosomes, where this ratio is reversed. Another difference between mammalian mitoribosomes and prokaryotic ribosomes is that the latter contain a 5S rRNA. Among different species, the proteins comprising the mitoribosome differ greatly in sequence, and sometimes in biochemical properties, which prevents easy recognition by sequence homology. This gene encodes a 28S subunit protein that belongs to the ribosomal protein S2 family. [provided by RefSeq]

Other Designations OTTHUMP00000022545|mitochondrial 28S ribosomal protein S2