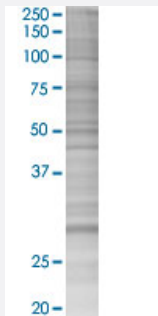


# CUTC 293T Cell Transient Overexpression Lysate(Denatured)

Catalog # H00051076-T03

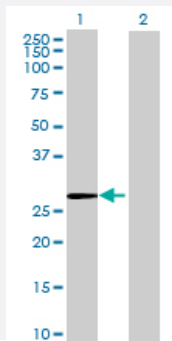
Size 100 uL

## Applications



### SDS-PAGE Gel

CUTC transfected lysate.



### Western Blot

Lane 1: CUTC transfected lysate ( 29.30 KDa)

Lane 2: Non-transfected lysate.

## Specification

Transfected Cell Line	293T
Plasmid	pCMV-CUTC full-length
Host	Human
Theoretical MW (kDa)	29.3
Interspecies Antigen Sequence	Mouse (92); Rat (88)

**Quality Control Testing**

Transient overexpression cell lysate was tested with Anti-CUTC antibody ([H00051076-B01P](#)) by Western Blots.  
SDS-PAGE Gel  
CUTC transfected lysate.  
Western Blot  
Lane 1: CUTC transfected lysate ( 29.30 KDa)  
Lane 2: Non-transfected lysate.

**Storage Buffer**

1X Sample Buffer (50 mM Tris-HCl, 2% SDS, 10% glycerol, 300 mM 2-mercaptoethanol, 0.01% Bromophenol blue)

**Storage Instruction**

Store at -80°C. Aliquot to avoid repeated freezing and thawing.

## Applications

- Western Blot

## Gene Info — CUTC

**Entrez GeneID**[51076](#)**GeneBank Accession#**[BC021105](#)**Protein Accession#**[AAH21105](#)**Gene Name**

CUTC

**Gene Alias**

CGI-32, RP11-483F11.3

**Gene Description**

cutC copper transporter homolog (E. coli)

**Omim ID**[610101](#)**Gene Ontology**[Hyperlink](#)**Gene Summary**

Members of the CUT family of copper transporters are associated with copper homeostasis and are involved in the uptake, storage, delivery, and efflux of copper (Gupta et al., 1995 [PubMed 763 5807]; Li et al., 2005 [PubMed 16182249]).[supplied by OMIM]

**Other Designations**

OTTHUMP00000020260|cutC copper transporter homolog