

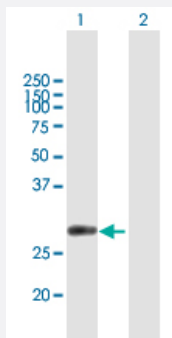
MaxPab®

CUTC purified MaxPab mouse polyclonal antibody (B01P)

Catalog # H00051076-B01P

Size 50 ug

Applications

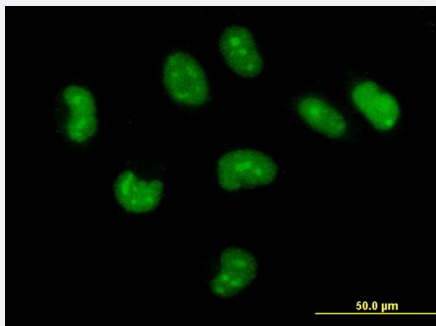


Western Blot (Transfected lysate)

Western Blot analysis of CUTC expression in transfected 293T cell line by CUTC MaxPab polyclonal antibody.

Lane 1: CUTC transfected lysate(30.03 kDa).

Lane 2: Non-transfected lysate.



Immunofluorescence

Immunofluorescence of purified MaxPab antibody to CUTC on HeLa cell.
[antibody concentration 10 ug/ml]

Specification

Product Description

Mouse polyclonal antibody raised against a full-length human CUTC protein.

Immunogen

CUTC (AAH21105, 1 a.a. ~ 273 a.a) full-length human protein.

Sequence

MKRQGASSERKRARIPSGKAGAANGFLMEVVCVDSVESAVNAERGGADRIELCSGLSEGGTTPS
MGVLQVVVKQSVQIPVFVMIRPRGGDFLYSDREIEVMKADIRLAKLYGADGLVFGALTEDGHIDKEL
CMSLMAICRPLPVTFHRAFDVMVHDPMAALETLLTLGFERVLTSFGCDSSALEGLPLIKRLIEQAKGRI
VVMPPGGGITDRNLQRILEGSGATEFHCSARSTRDSGMKFRNSSVAMGASLSCSEYSLKVTDVTK
VRTLNIAIKNILV

Host

Mouse

Reactivity	Human
Interspecies Antigen Sequence	Mouse (92); Rat (88)
Quality Control Testing	Antibody reactive against mammalian transfected lysate.
Storage Buffer	In 1x PBS, pH 7.4
Storage Instruction	Store at -20°C or lower. Aliquot to avoid repeated freezing and thawing.

Applications

- Western Blot (Transfected lysate)

Western Blot analysis of CUTC expression in transfected 293T cell line by CUTC MaxPab polyclonal antibody.

Lane 1: CUTC transfected lysate(30.03 KDa).

Lane 2: Non-transfected lysate.

[Protocol Download](#)

- Immunofluorescence

Immunofluorescence of purified MaxPab antibody to CUTC on HeLa cell. [antibody concentration 10 ug/ml]

Gene Info — CUTC

Entrez GeneID	51076
GeneBank Accession#	BC021105
Protein Accession#	AAH21105
Gene Name	CUTC
Gene Alias	CGI-32, RP11-483F11.3
Gene Description	cutC copper transporter homolog (E. coli)
Omim ID	610101
Gene Ontology	Hyperlink
Gene Summary	Members of the CUT family of copper transporters are associated with copper homeostasis and are involved in the uptake, storage, delivery, and efflux of copper (Gupta et al., 1995 [PubMed 763 5807]; Li et al., 2005 [PubMed 16182249]).[supplied by OMIM]

Other DesignationsOTTHUMP00000020260|cutC copper transporter homolog
