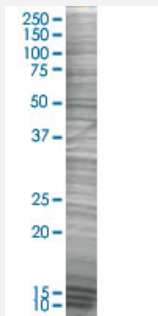


MRPL2 293T Cell Transient Overexpression Lysate(Denatured)

Catalog # H00051069-T03

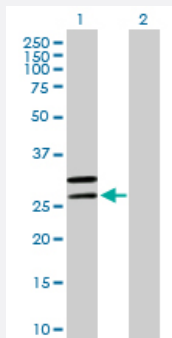
Size 100 uL

Applications



SDS-PAGE Gel

MRPL2 transfected lysate.



Western Blot

Lane 1: MRPL2 transfected lysate (33.3 KDa)

Lane 2: Non-transfected lysate.

Specification

Transfected Cell Line	293T
Plasmid	pCMV-MRPL2 full-length
Host	Human
Theoretical MW (kDa)	33.3
Interspecies Antigen Sequence	Mouse (83); Rat (83)

Quality Control Testing

Transient overexpression cell lysate was tested with Anti-MRPL2 antibody ([H00051069-B01P](#)) by Western Blots.
 SDS-PAGE Gel
 MRPL2 transfected lysate.
 Western Blot
 Lane 1: MRPL2 transfected lysate (33.3 KDa)
 Lane 2: Non-transfected lysate.

Storage Buffer

1X Sample Buffer (50 mM Tris-HCl, 2% SDS, 10% glycerol, 300 mM 2-mercaptoethanol, 0.01% Bromophenol blue)

Storage Instruction

Store at -80°C. Aliquot to avoid repeated freezing and thawing.

Applications

- Western Blot

Gene Info — MRPL2

Entrez GeneID

[51069](#)

GeneBank Accession#

[NM_015950](#)

Protein Accession#

[NP_057034](#)

Gene Name

MRPL2

Gene Alias

CGI-22, MRP-L14, RPML14

Gene Description

mitochondrial ribosomal protein L2

Gene Ontology

[Hyperlink](#)

Gene Summary

Mammalian mitochondrial ribosomal proteins are encoded by nuclear genes and help in protein synthesis within the mitochondrion. Mitochondrial ribosomes (mitoribosomes) consist of a small 28 S subunit and a large 39S subunit. They have an estimated 75% protein to rRNA composition compared to prokaryotic ribosomes, where this ratio is reversed. Another difference between mammalian mitoribosomes and prokaryotic ribosomes is that the latter contain a 5S rRNA. Among different species, the proteins comprising the mitoribosome differ greatly in sequence, and sometimes in biochemical properties, which prevents easy recognition by sequence homology. This gene encodes a 39S subunit protein that belongs to the EcoL2 ribosomal protein family. A pseudogene corresponding to this gene is found on chromosome 12q. [provided by RefSeq]

Other Designations

OTTHUMP00000016419