

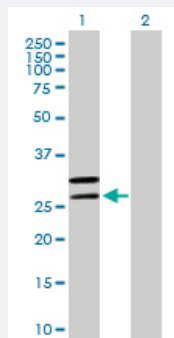
MaxPab®

# MRPL2 purified MaxPab mouse polyclonal antibody (B01P)

Catalog # H00051069-B01P

Size 50 ug

## Applications



### Western Blot (Transfected lysate)

Western Blot analysis of MRPL2 expression in transfected 293T cell line ([H00051069-T03](#)) by MRPL2 MaxPab polyclonal antibody.

Lane 1: MRPL2 transfected lysate(33.55 KDa).

Lane 2: Non-transfected lysate.

## Specification

Product Description	Mouse polyclonal antibody raised against a full-length human MRPL2 protein.
Immunogen	MRPL2 (NP_057034, 1 a.a. ~ 305 a.a) full-length human protein.
Sequence	MALCALTRALRSLNLAPPTVAAPAPSLFPAAQMMNNGLLQQPSALMLLPCRPVLT SVALNANFV SWKSRTKYTITPVKMRKSGGRDHTGRIRVHGIGGGHKQRYRMIDFLRFRPEETKSGPFEEKVIQVR YDPCRSADIALVAGGSRKRWIATENMQAGDTILNSNHIGRMAVAAREGDAHPLGALPVGT LINNVE SEPGRGAQYIRAAGTCGVLLRKVNGTAIQLP SKRQMQVLETCVATVGRVSNVDHNRKRVIGKAGR NRWLGKRPN SGRWHRKGGWAGRKIRPLPPMKSYVKLPSASAQS
Host	Mouse
Reactivity	Human
Interspecies Antigen Sequence	Mouse (83); Rat (83)
Quality Control Testing	Antibody reactive against mammalian transfected lysate.
Storage Buffer	In 1x PBS, pH 7.4
Storage Instruction	Store at -20°C or lower. Aliquot to avoid repeated freezing and thawing.

## Applications

- Western Blot (Transfected lysate)

Western Blot analysis of MRPL2 expression in transfected 293T cell line ([H00051069-T03](#)) by MRPL2 MaxPab polyclonal antibody.

Lane 1: MRPL2 transfected lysate(33.55 KDa).

Lane 2: Non-transfected lysate.

[Protocol Download](#)

## Gene Info — MRPL2

Entrez GeneID [51069](#)

GeneBank Accession# [NM\\_015950](#)

Protein Accession# [NP\\_057034](#)

Gene Name MRPL2

Gene Alias CGI-22, MRP-L14, RPML14

Gene Description mitochondrial ribosomal protein L2

Gene Ontology [Hyperlink](#)

**Gene Summary** Mammalian mitochondrial ribosomal proteins are encoded by nuclear genes and help in protein synthesis within the mitochondrion. Mitochondrial ribosomes (mitoribosomes) consist of a small 28 S subunit and a large 39S subunit. They have an estimated 75% protein to rRNA composition compared to prokaryotic ribosomes, where this ratio is reversed. Another difference between mammalian mitoribosomes and prokaryotic ribosomes is that the latter contain a 5S rRNA. Among different species, the proteins comprising the mitoribosome differ greatly in sequence, and sometimes in biochemical properties, which prevents easy recognition by sequence homology. This gene encodes a 39S subunit protein that belongs to the EcoL2 ribosomal protein family. A pseudogene corresponding to this gene is found on chromosome 12q. [provided by RefSeq]

**Other Designations** OTTHUMP00000016419