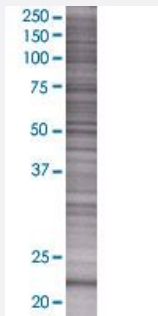


# EXOSC1 293T Cell Transient Overexpression Lysate(Denatured)

Catalog # H00051013-T02

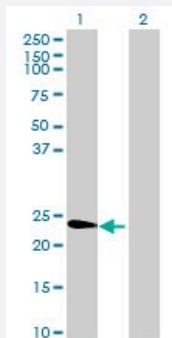
Size 100 uL

## Applications



### SDS-PAGE Gel

EXOSC1 transfected lysate.



### Western Blot

Lane 1: EXOSC1 transfected lysate ( 21.5 KDa)

Lane 2: Non-transfected lysate.

## Specification

Transfected Cell Line	293T
Plasmid	pCMV-EXOSC1 full-length
Host	Human
Theoretical MW (kDa)	21.5
Interspecies Antigen Sequence	Mouse (95); Rat (95)

#### Quality Control Testing

Transient overexpression cell lysate was tested with Anti-EXOSC1 antibody ([H00051013-B02](#)) by Western Blots.  
 SDS-PAGE Gel  
 EXOSC1 transfected lysate.  
 Western Blot  
 Lane 1: EXOSC1 transfected lysate ( 21.5 KDa)  
 Lane 2: Non-transfected lysate.

#### Storage Buffer

1X Sample Buffer (50 mM Tris-HCl, 2% SDS, 10% glycerol, 300 mM 2-mercaptoethanol, 0.01% Bromophenol blue)

#### Storage Instruction

Store at -80°C. Aliquot to avoid repeated freezing and thawing.

## Applications

- Western Blot

## Gene Info — EXOSC1

#### Entrez GeneID

[51013](#)

#### GeneBank Accession#

[NM\\_016046](#)

#### Protein Accession#

[NP\\_057130](#)

#### Gene Name

EXOSC1

#### Gene Alias

CGI-108, CSL4, Csl4p, SKI4, Ski4p, hCsl4p, p13

#### Gene Description

exosome component 1

#### Omim ID

[606493](#)

#### Gene Ontology

[Hyperlink](#)

#### Gene Summary

This gene encodes a core component of the exosome. The mammalian exosome is required for rapid degradation of AU rich element-containing RNAs but not for poly(A) shortening. The association of this protein with the exosome is mediated by protein-protein interactions with ribosomal RNA-processing protein 42 and ribosomal RNA-processing protein 46. [provided by RefSeq]

#### Other Designations

3'-5' exoribonuclease CSL4 homolog|CSL4 exosomal core protein homolog|OTTHUMP00000020203|exosomal core protein CSL4|homolog of yeast exosomal core protein CSL4

## Pathway

- [RNA degradation](#)