

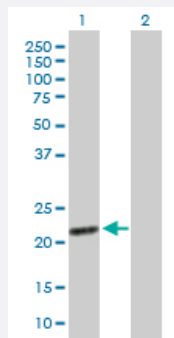
MaxPab®

EXOSC1 purified MaxPab mouse polyclonal antibody (B02P)

Catalog # H00051013-B02P

Size 50 ug

Applications

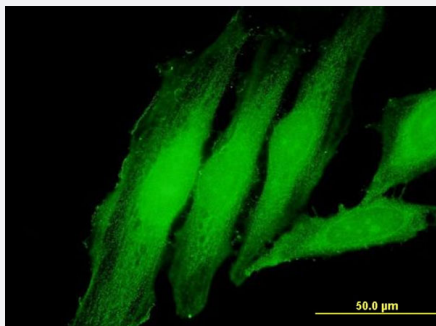


Western Blot (Transfected lysate)

Western Blot analysis of EXOSC1 expression in transfected 293T cell line ([H00051013-T03](#)) by EXOSC1 MaxPab polyclonal antibody.

Lane 1: EXOSC1 transfected lysate(21.45 KDa).

Lane 2: Non-transfected lysate.



Immunofluorescence

Immunofluorescence of purified MaxPab antibody to EXOSC1 on HeLa cell. [antibody concentration 10 ug/ml]

Specification

Product Description	Mouse polyclonal antibody raised against a full-length human EXOSC1 protein.
Immunogen	EXOSC1 (NP_057130.1, 1 a.a. ~ 195 a.a) full-length human protein.
Sequence	MAPPVRYCIPGERLCNLEEGSPGSGTYTRHGYIFSSLAGCLMKSSENGALPVVSVVRETESQLLP DVGAMVTKVSSINSRFAKVHILYVGSMPKNSFRGTIRKEDVRATEKDKEIYKSFRPGDIVLAKVI SLGDAQSNYLLTTAENELGVVVAHSESGIQMVPISWCCEMQCPKTHTKFRKVARVQPEFLQT
Host	Mouse
Reactivity	Human

Interspecies Antigen Sequence	Mouse (95); Rat (95)
Quality Control Testing	Antibody reactive against mammalian transfected lysate.
Storage Buffer	In 1x PBS, pH 7.4
Storage Instruction	Store at -20°C or lower. Aliquot to avoid repeated freezing and thawing.

Applications

- Western Blot (Transfected lysate)

Western Blot analysis of EXOSC1 expression in transfected 293T cell line ([H00051013-T03](#)) by EXOSC1 MaxPab polyclonal antibody.

Lane 1: EXOSC1 transfected lysate(21.45 KDa).

Lane 2: Non-transfected lysate.

[Protocol Download](#)

- Immunofluorescence

Immunofluorescence of purified MaxPab antibody to EXOSC1 on HeLa cell. [antibody concentration 10 ug/ml]

Gene Info — EXOSC1

Entrez GeneID	51013
GeneBank Accession#	NM_016046
Protein Accession#	NP_057130.1
Gene Name	EXOSC1
Gene Alias	CGI-108, CSL4, Csl4p, SKI4, Ski4p, hCsl4p, p13
Gene Description	exosome component 1
Omim ID	606493
Gene Ontology	Hyperlink
Gene Summary	This gene encodes a core component of the exosome. The mammalian exosome is required for rapid degradation of AU rich element-containing RNAs but not for poly(A) shortening. The association of this protein with the exosome is mediated by protein-protein interactions with ribosomal RNA-processing protein 42 and ribosomal RNA-processing protein 46. [provided by RefSeq]

Other Designations

3'-5' exoribonuclease CSL4 homolog|CSL4 exosomal core protein homolog|OTTHUMP0000002023|exosomal core protein CSL4|homolog of yeast exosomal core protein CSL4

Pathway

- [RNA degradation](#)